

2019+ FORD RANGER ROKBLOKZ Mud Flap Installation Instructions

Professional Installation Recommended

PLEASE READ THROUGH ALL OF THE INSTRUCTIONS!

TIP - Turning the front wheels should provide enough room up front.

TIP - An angled or ratcheting screwdriver makes this install much easier.

TIP - The hardware is strong and can be securely fastened, but **DON'T OVER TIGHTEN**.

TIP - Adding a few drops of blue thread locker can help keep screws from periodically loosening. However, it is a good idea to check and re tighten every once in a while.

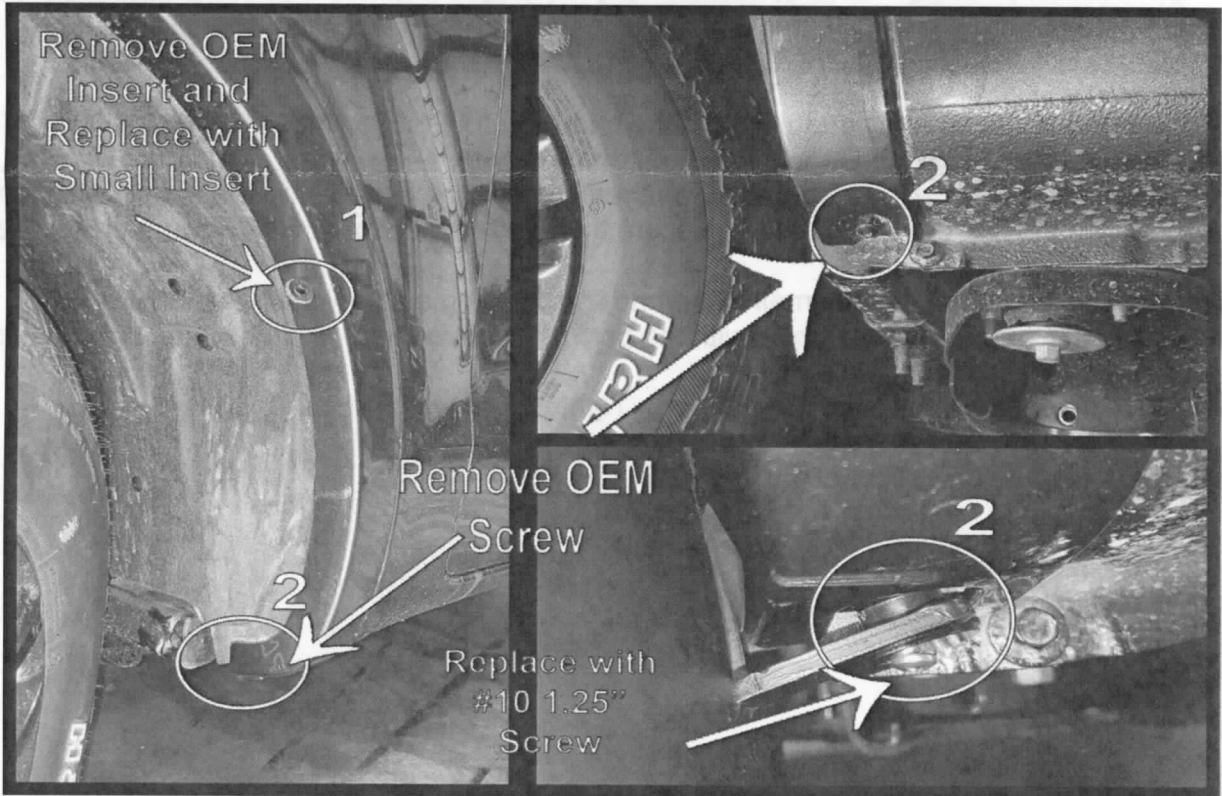
TIP - Wait to tighten the screws until the flaps are adjusted to your liking.

TIP - Seriously, read the instructions thoroughly. Look at the pictures. Email us if you have questions.

FRONT-

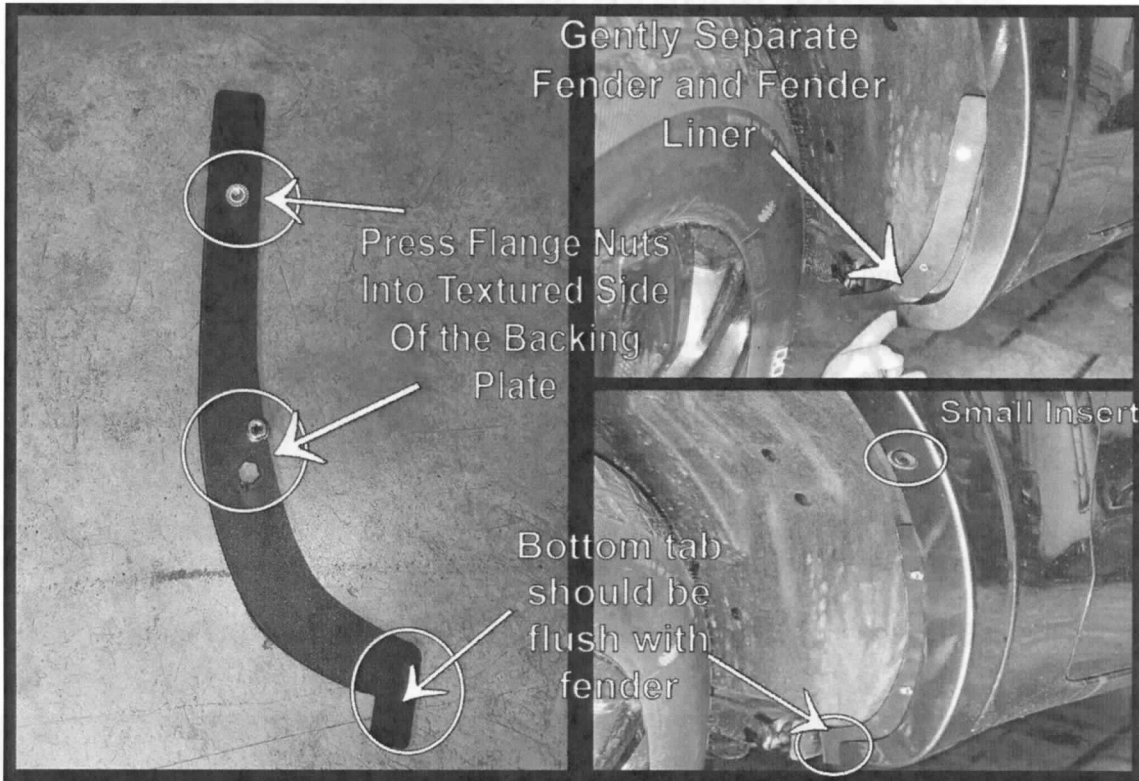
1. Remove the OEM Insert shown in Figure A. (Unscrew the center screw with a Phillips Head Screwdriver, and then pull out the insert). Replace it with the small insert provided in the hardware kit.
2. Remove the OEM screw from the underside of the wheel well shown in Figure A.

FIGURE A



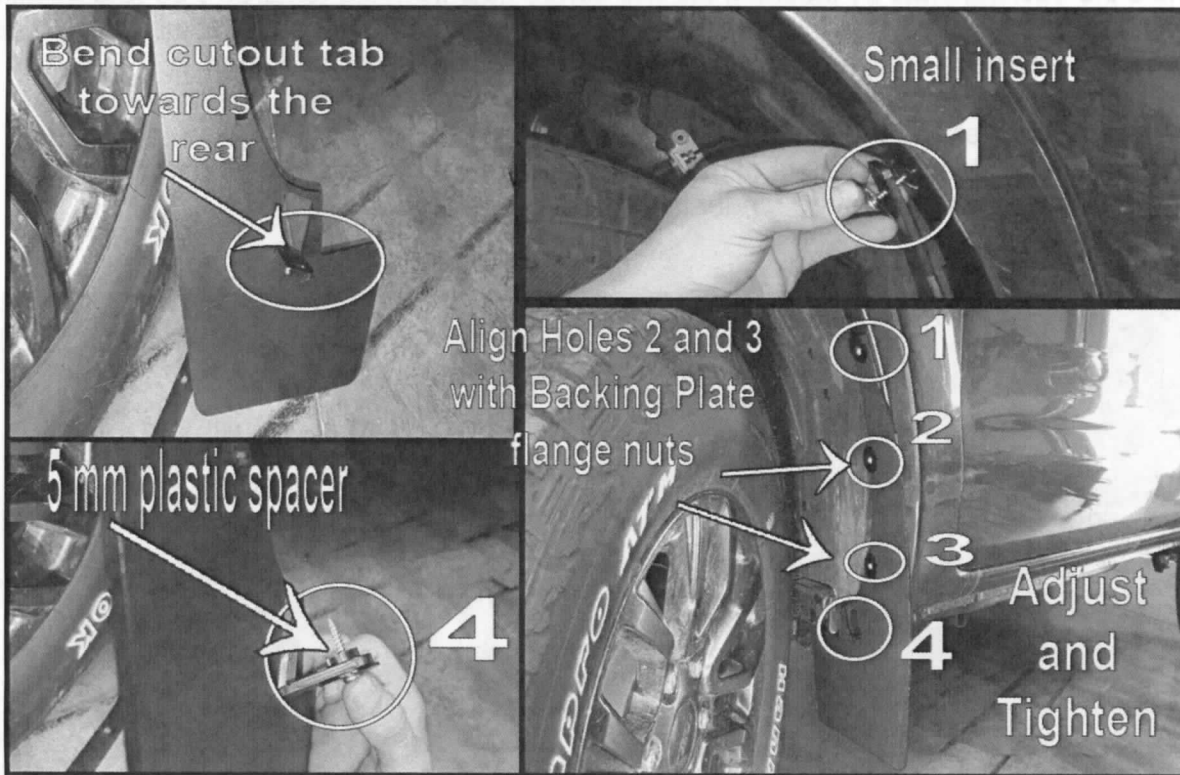
3. Assemble the backing plate by inserting the two flange nuts into the backside (the backing plate should have the textured side facing the rear of the vehicle) and push firmly until the flange nuts are tight in the plate. Figure B
4. Gently pull the Fender out and insert the Backing Plate between the fender liner and the fender. The Backing Plate should fit snugly between and should be slid until the tab at the bottom is flush with the Fender. See Figure B.

FIGURE B



5. Take the front flap and carefully bend the middle cutout tab towards the textured side of the flap as shown in Figure C.
6. Using a screw, washer through the flap then place a 5mm spacer on the screw, so it mounts between the flap tab and the body, secure the tab to the bottom of the Fender on the Vehicle. Figure C.
7. Align the top hole with the small insert and attach using a screw and washer. Figure C.
8. Adjust flap to align middle holes with the backing plate behind. Attach using 1/2 "machine screws and washers.
9. Adjust flap to be level and to your liking. Tighten Screws until snug.
****DO NOT OVERTIGHEN.
10. Repeat for the other side of the vehicle.

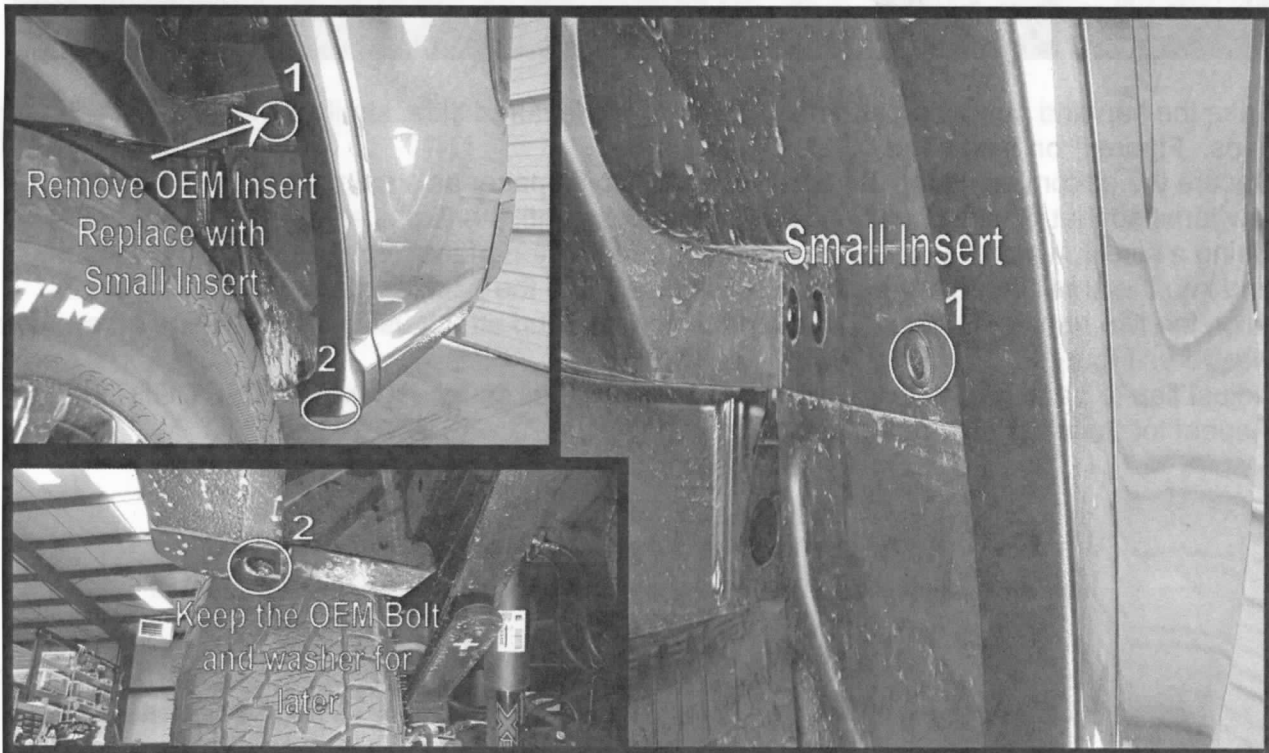
FIGURE C



REAR- See Pictures.

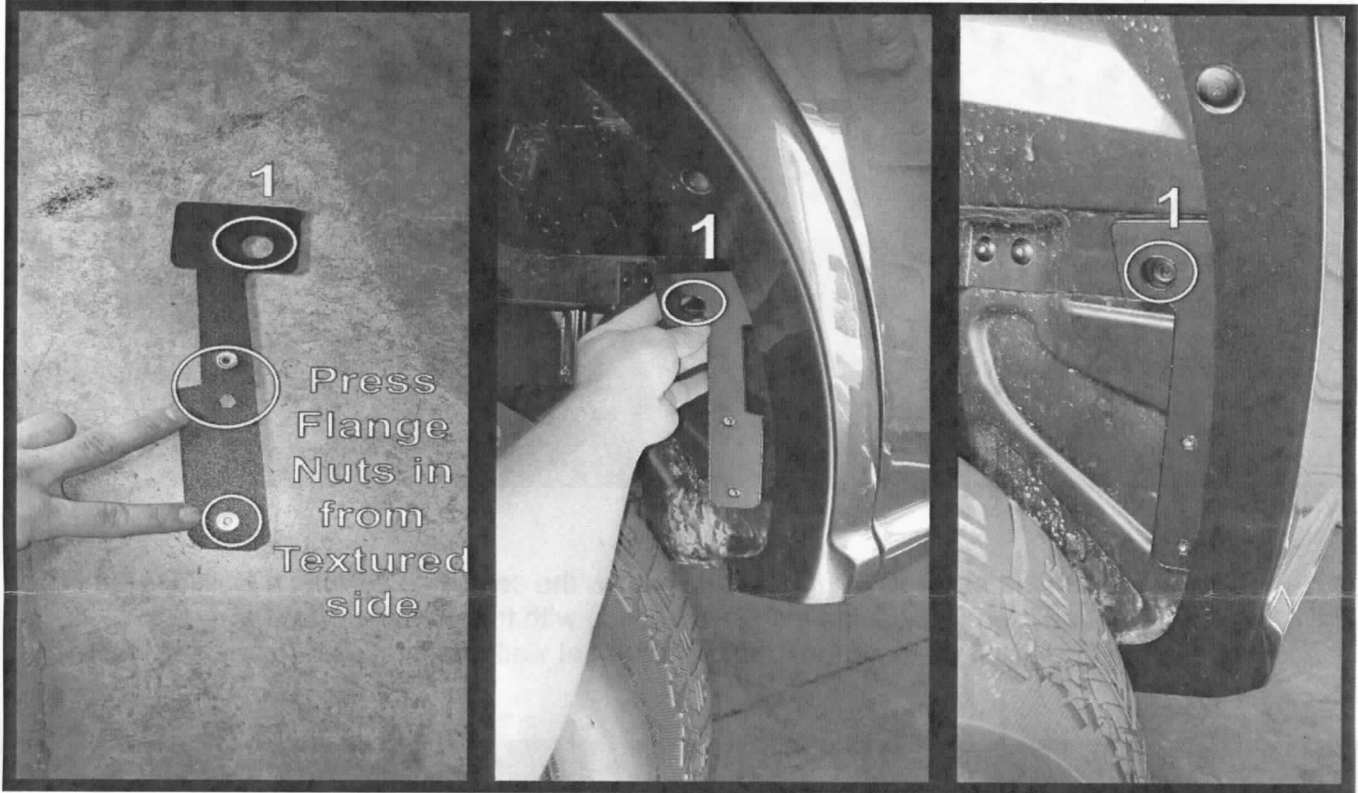
1. Remove OEM Insert shown in Figure D. (Unscrew the center screw with a Phillips Head Screwdriver, and then pull out the insert). Replace with the provided small insert.
2. Remove the OEM Bolt on the underside of the wheel well and set aside to be used later.

FIGURE D



3. Assemble the backing plate by inserting the two flange nuts from the textured side (the backing plate will have the textured side towards the rear with the rectangular cutout facing the outside of the vehicle) and push firmly until the flange nuts are tight in the plate. Figure E.
4. Gently Pull on the inside of the fender to separate it from the fender liner. Insert the backing plate between the liner and the fender lip.
5. Align the backing plate in the groove of the fender liner, covering the OEM hole from step 1. The plate should fit nicely in the fender liner groove. See Figure E.

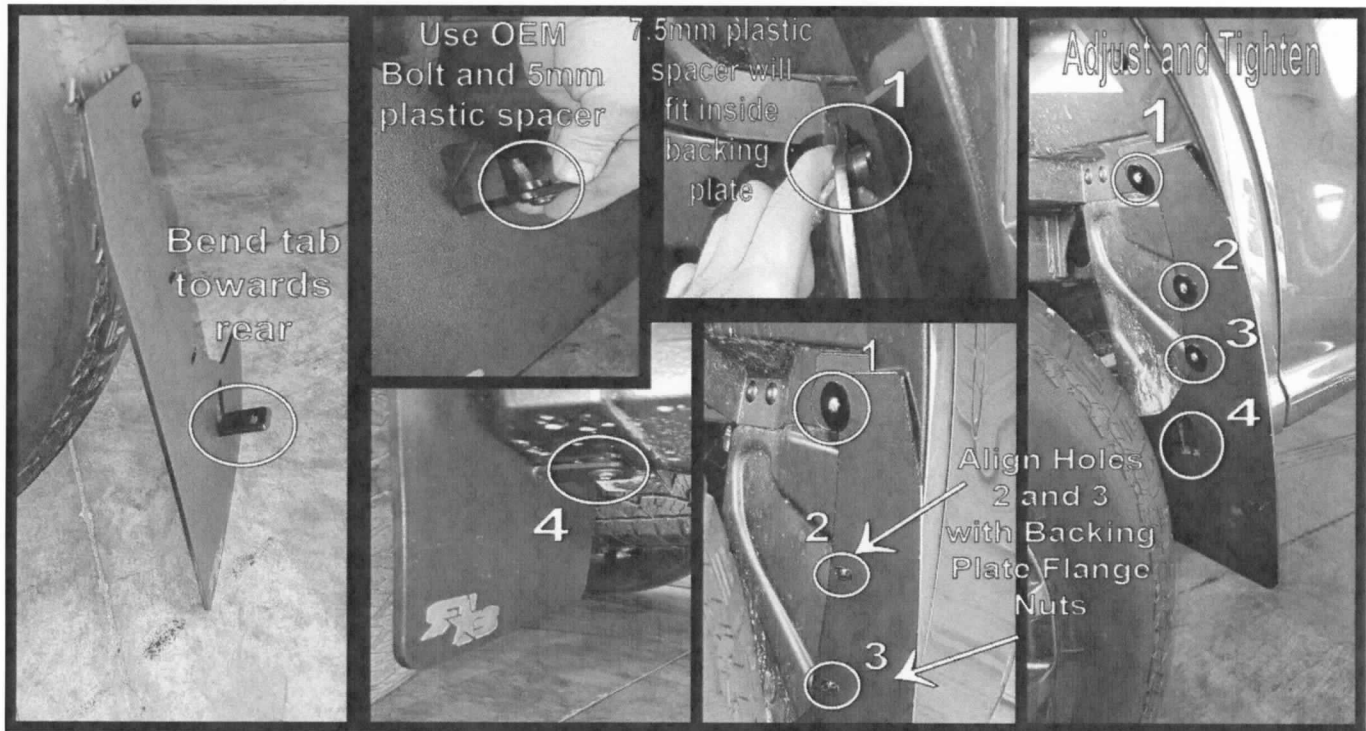
FIGURE E



6. Take the flap and bend the bottom tab towards the textured side, similar to the front flaps. Figure F on next page.
7. Secure the bottom tab using the OEM bolt and 5mm spacer as shown in Figure F. Tighten a few turns so that it holds, but it should remain loose until the flap is adjusted.
8. Using a screw, washer and 7.5mm spacer, attach the top of the flap through the backing plate and into the small insert. The spacer will fit nicely into the backing plate. Figure F.
9. Align the two remaining holes with the backing plate and attach using 5/8" machine screws and washers. Figure F.
10. Adjust flap to be level and to your liking and tighten until snug. **DO NOT OVERTIGHTEN.**
11. Repeat for the other side of the vehicle.



FIGURE F



These instructions are meant only to be a guide and do not replace common sense and/or professional assistance. The manufacturer and or seller of this product cannot be held responsible for any damage to persons or property caused by/to/from installation or use of these product

Included Hardware

2 Front & 2 Rear Backing Plates.

FRONT HARDWARE:

- x8 1.25" Black Washers**
- X4 #10 x 1/2" Screws**
- X4 #10 Flange Nut**
- X4 #10 x 1.25" Screws**
- x2 5mm Plastic Spacer**
- X2 Small Insert**

REAR HARDWARE:

- X2 7.5mm Plastic Spacer**
- X2 5mm Plastic Spacer**
- X2 Small Inserts**
- X6 1.25" Black Washers**
- X4 #10 Flange Nut**
- x4 #10 x 5/8" Screws**
- X2 #10 x 1.25" Screws**