



FORD ACCESSORIES
Licensed

Custom Accessories

Hard Folding Bed Cover

Cubierta para caja plegable dura

Couvre-benne rigide et pliable

Owner's Manual
Manual del Propietario
Guide de l'utilisateur



3 1 8 B 0 0 3 9

Contents

SAFETY INSTRUCTIONS, START INSTALLATION:.....	1
TRIM 6' DROP IN BED LINER:	2
CLEAN MOUNTING THREADS- 6' BED:	2
INSTALL ADDITIONAL BED RAIL BRACKETS- 6' BED:	3
INSTALL BULKHEAD SEALS:	3
INSTALL BULKHEAD RAIL:	3
INSTALL BULKHEAD RAIL continued:	4
RAIL and CLAMP INSTALL:	5
CLAMP INSTALL continued, COVER TIE DOWN BUCKLES:	6
COVER INSTALL:	7
COVER INSTALL continued:	8
DRAIN HOSE, CAB BUMPER and PROP ROD INSTALLS:	9
SECURING THE COVER:	10
TAIL PANEL OPERATIONS & OPERATING TIPS:	11
CARE AND MAINTENANCE & WARRANTY:.....	12

SAFETY INSTRUCTIONS

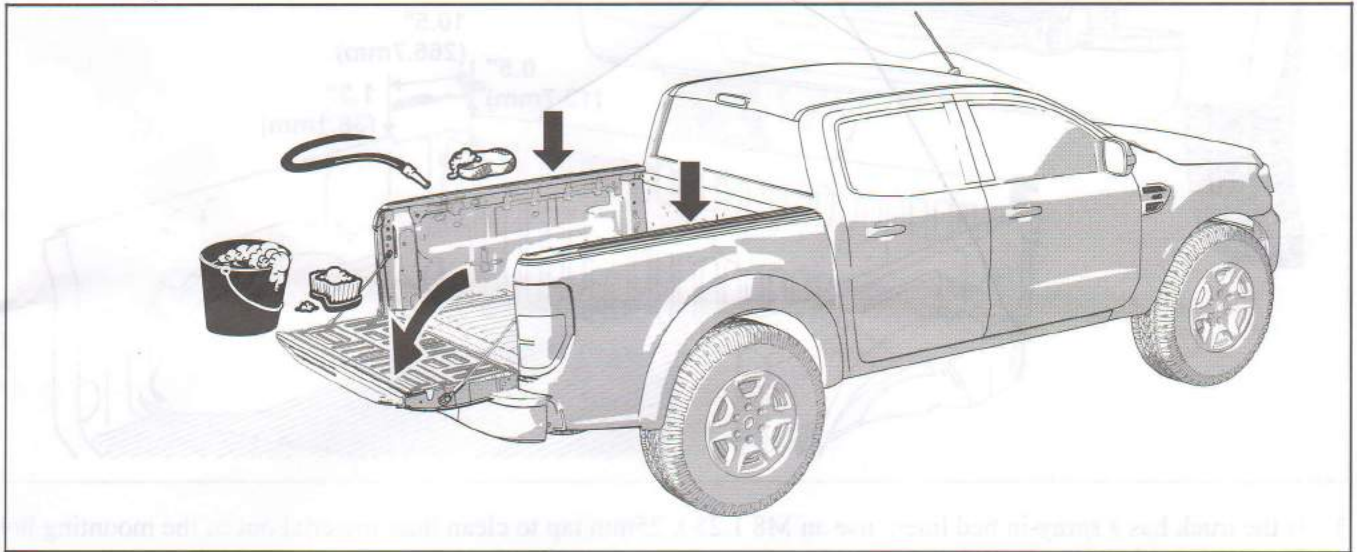
NOTE:

IMPORTANT!

- Do not place objects on or against cover or framework.
- Do not tie cargo to tonneau cover framework.
- Never allow children or pets to occupy pickup box while cover is closed.
- Cover is not airtight. Special care is required to keep cargo clean and dry.
- Cover must be fully open and secured with safety straps when towing vehicle backwards.
- While driving, the tonneau cover must be either:
 - Folded and secured by latching the front safety straps.
 - Unfolded and secured to truck bed.

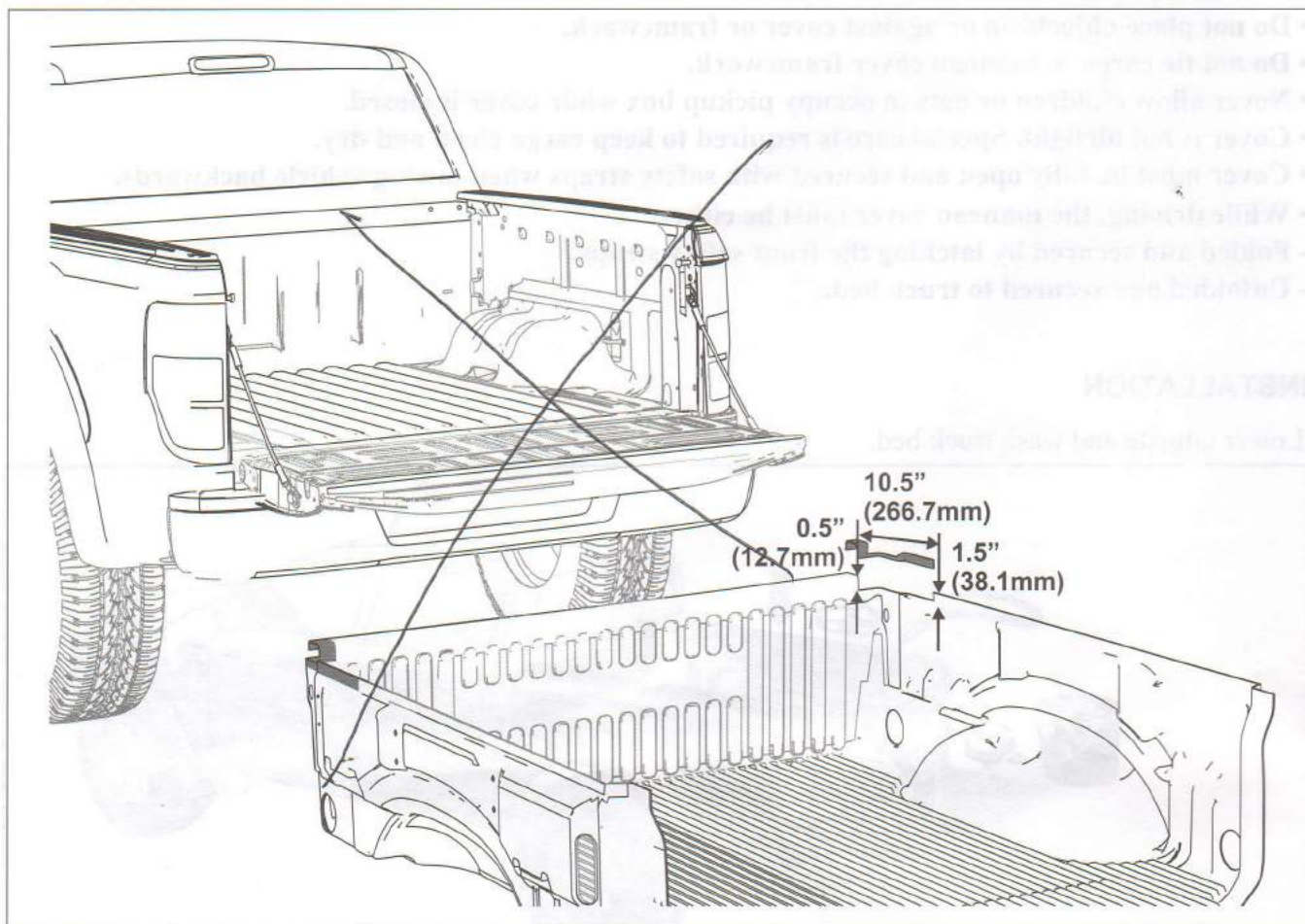
INSTALLATION

Lower tailgate and wash truck bed.

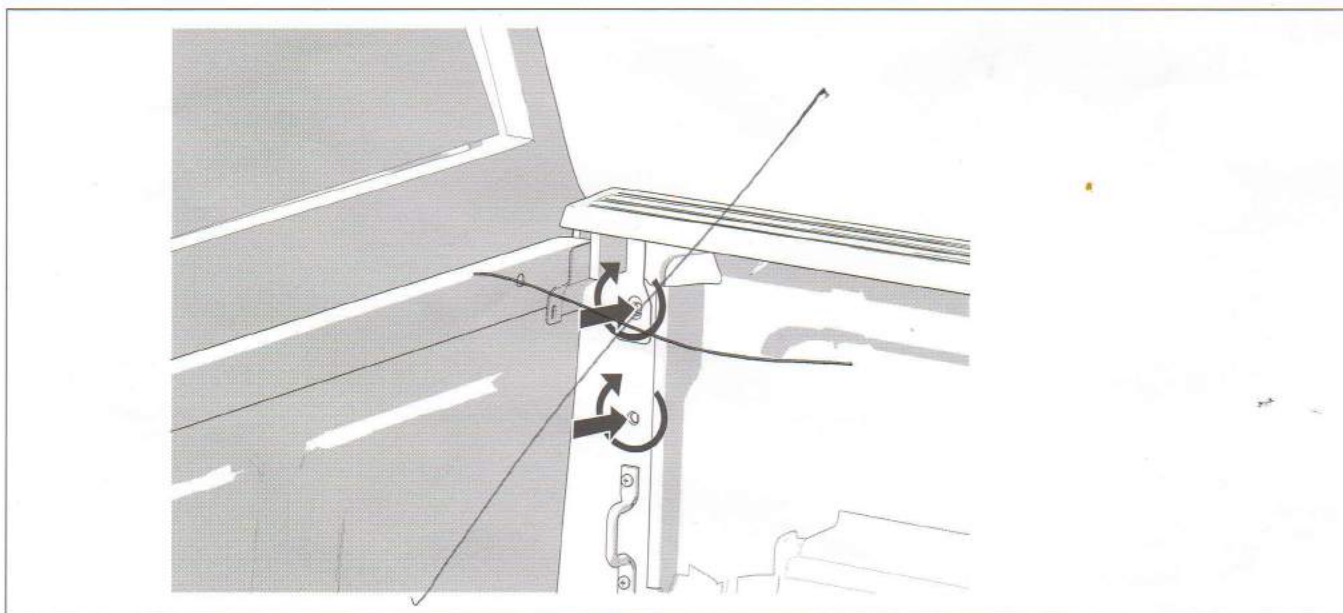


NOTE: Steps 1 through 4 are for 6' beds only.

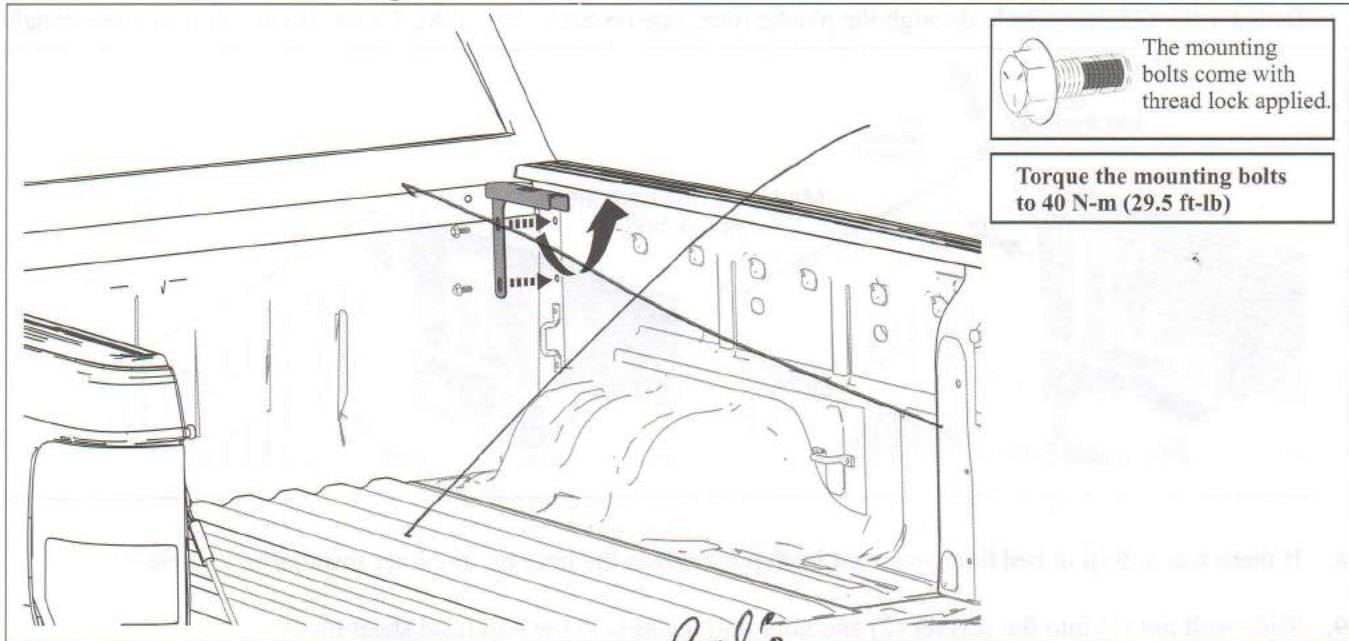
1. If the truck has a drop-in bed liner, remove the liner from the truck. If not, proceed to step 3.
2. Trim off both front (cab) corners per dimensions shown.



3. If the truck has a spray-in bed liner, use an M8 1.25 x 25mm tap to clean liner material out of the mounting holes. If not, proceed to step 4



4. Attach the rail brackets to each corner. Tuck the bracket snug under the truck bed rail. Thread the two bolts into the threaded bed holes and tighten. Attach brackets on both sides.



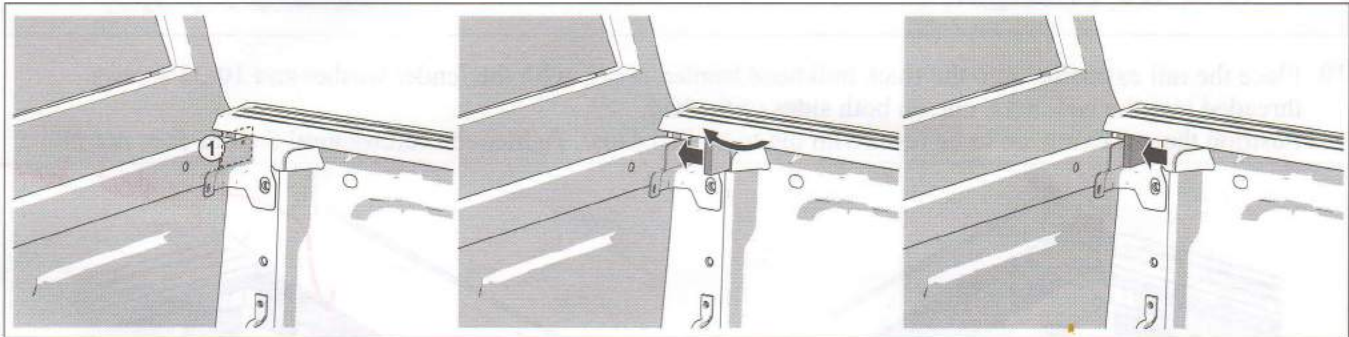
5. Install two bulkhead wall seals.

NOTE: The bulkhead seals are installed without any drop-in liner in place.

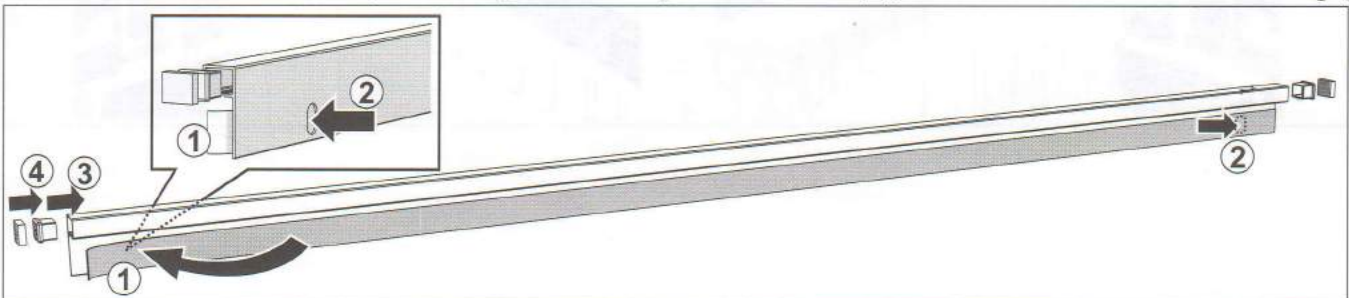
Clean and prep the surface shown (1), both driver and passenger sides, for adhesion.

Remove the backside adhesive covering and position the square seal up into the corner, under the bed rail cap and onto the bulkhead face.

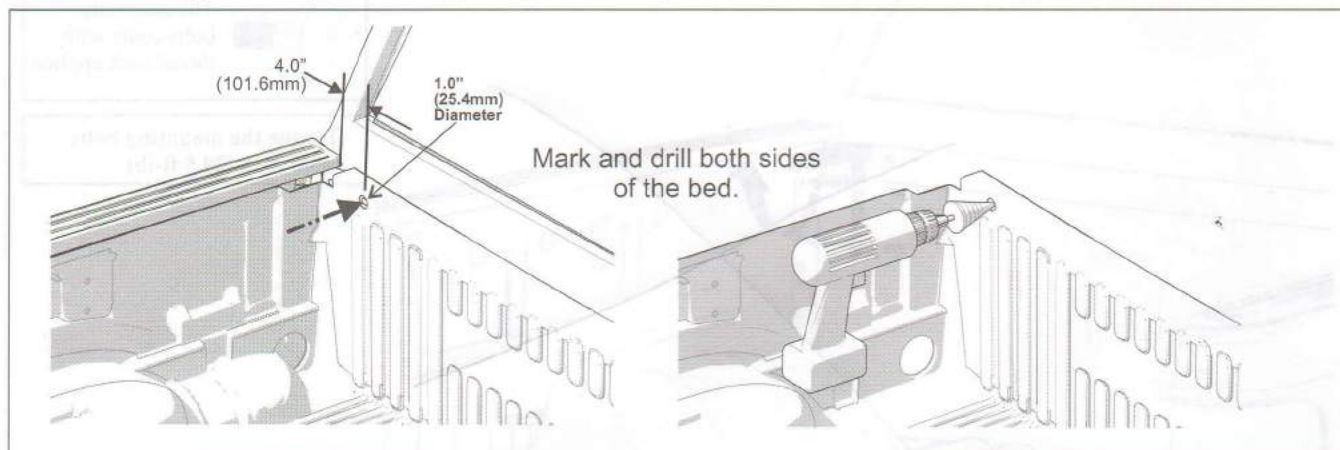
Press the seal firmly onto the bulkhead sheet metal. Place a seal on both the driver and passenger sides.



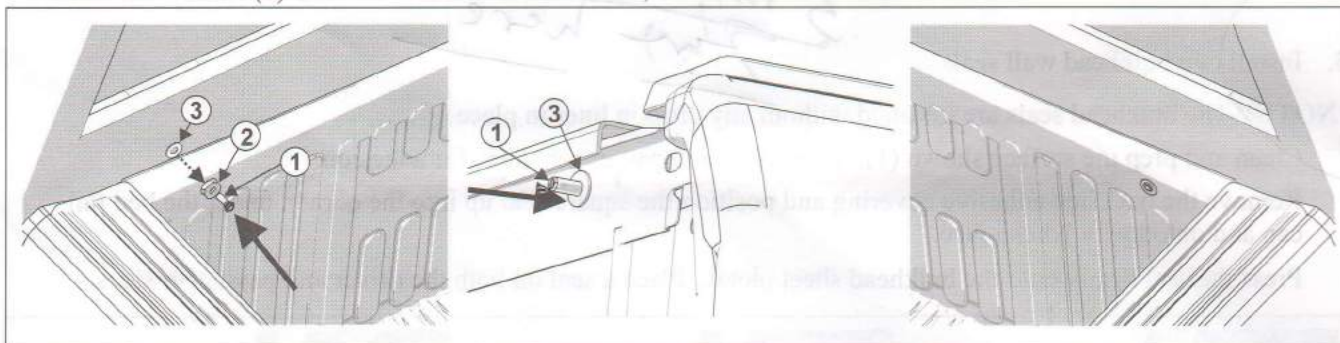
6. Preassemble the bulkhead rail: adhere the foam strip to the inside leg of the extrusion (1), cut access in the strip (2) for the screws and well nuts; insert the plastic end caps on both sides (3); adhere a foam block to each end cap (4).



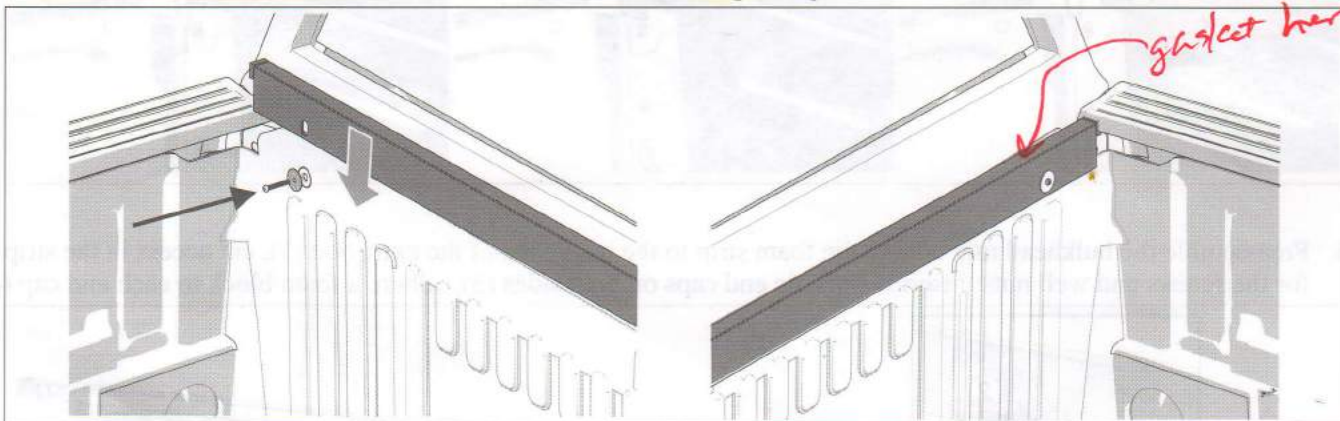
7. If the truck has a drop-in bed liner, drill two access holes, if not proceed to step 9. Measure and mark 4", (101.6mm) from the inside edge of the bed cap and coincident with the bulkhead hole. Drill a 1.0", (25.4mm) hole through the plastic liner, one on each side. CAUTION, Do not drill into the metal bed.



8. If there was a drop in bed liner removed in step 1, replace the liner per the liner install instructions.
9. Slide well nut (1) into the washer (2) and both into the hole in the bulkhead sheet metal. Slide the washer (3) onto the well nut from behind, do this for both sides of the bed.

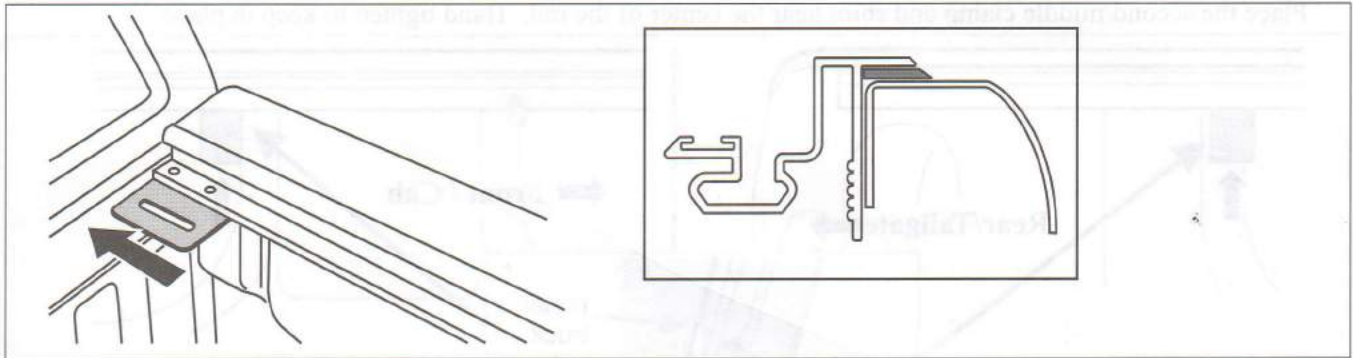


10. Place the rail extrusion onto the truck bulkhead header, attach with the fender washer and 10-32 screws threaded into the well nuts, one on both sides of the bed. Position the rail extrusion to be level with the truck bed caps. Tighten the screws until the rail does not move.



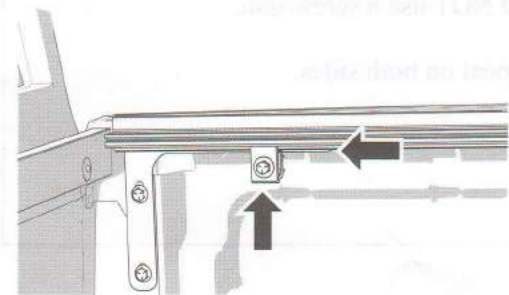
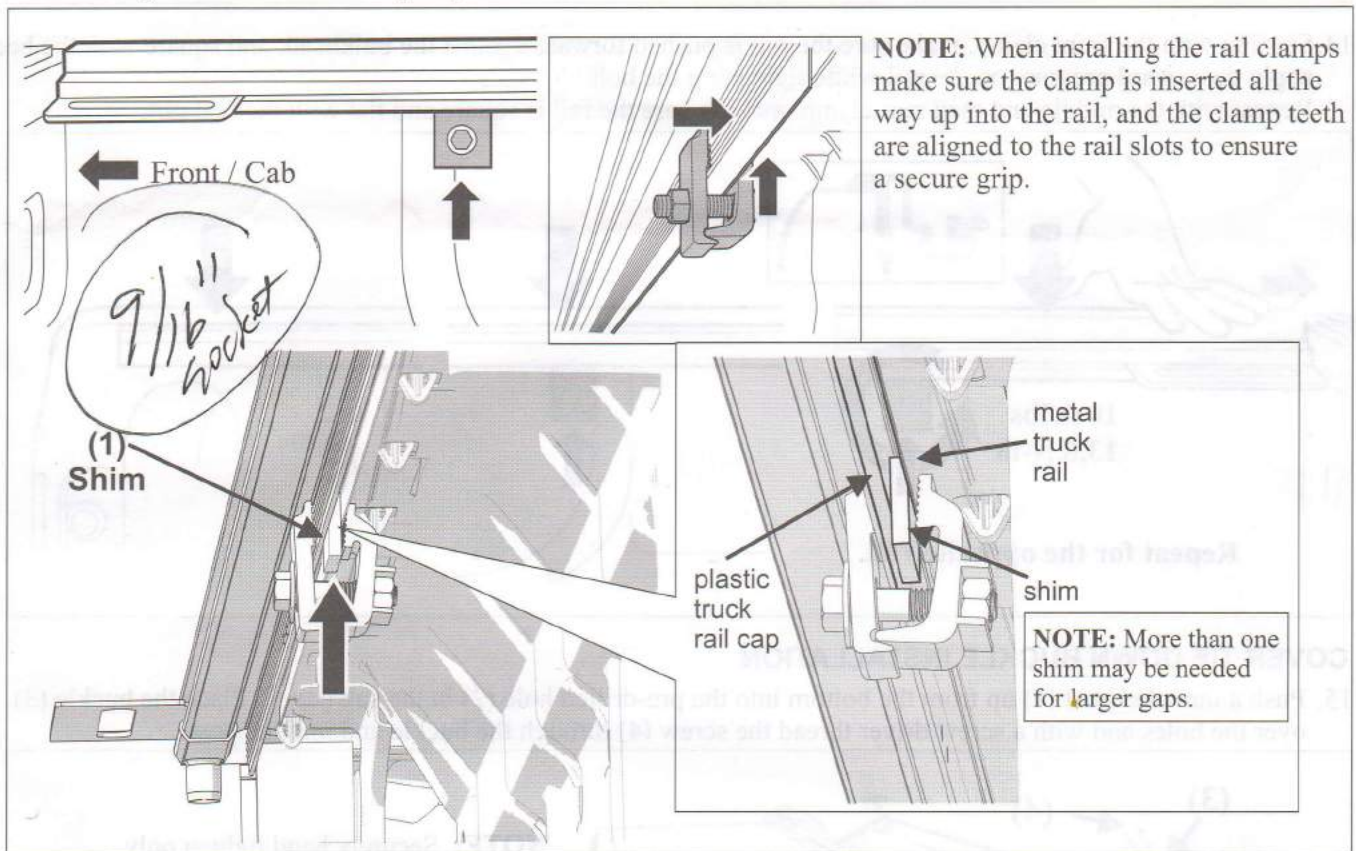
RAIL INSTALLATION

11. Place the rail on the truck bed cap. The slotted bracket will be in the front toward the bulkhead. Check that the rubber flap seal is flat on the bed cap. Repeat on the other side.



RAIL CLAMP INSTALLATION

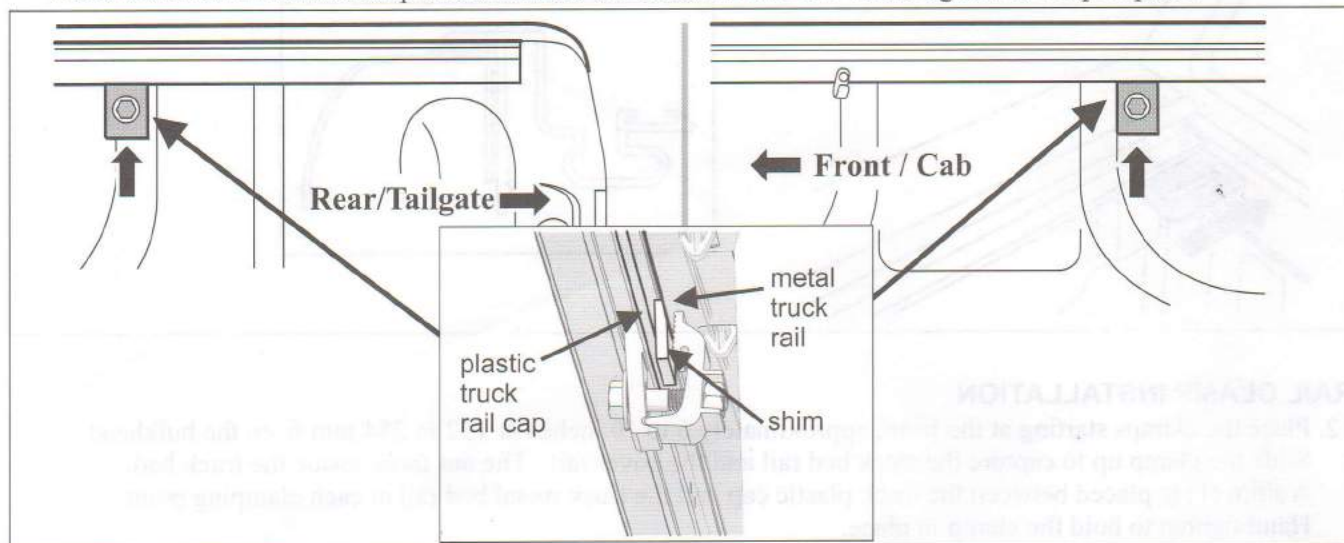
12. Place the clamps starting at the front, approximately 6 to 10 inches or 152 to 254 mm from the bulkhead. Slide the clamp up to capture the truck bed rail and the cover rail. The nut faces inside the truck bed. A shim (1) is placed between the truck plastic cap and the truck metal bed rail at each clamping point. Hand tighten to hold the clamp in place.



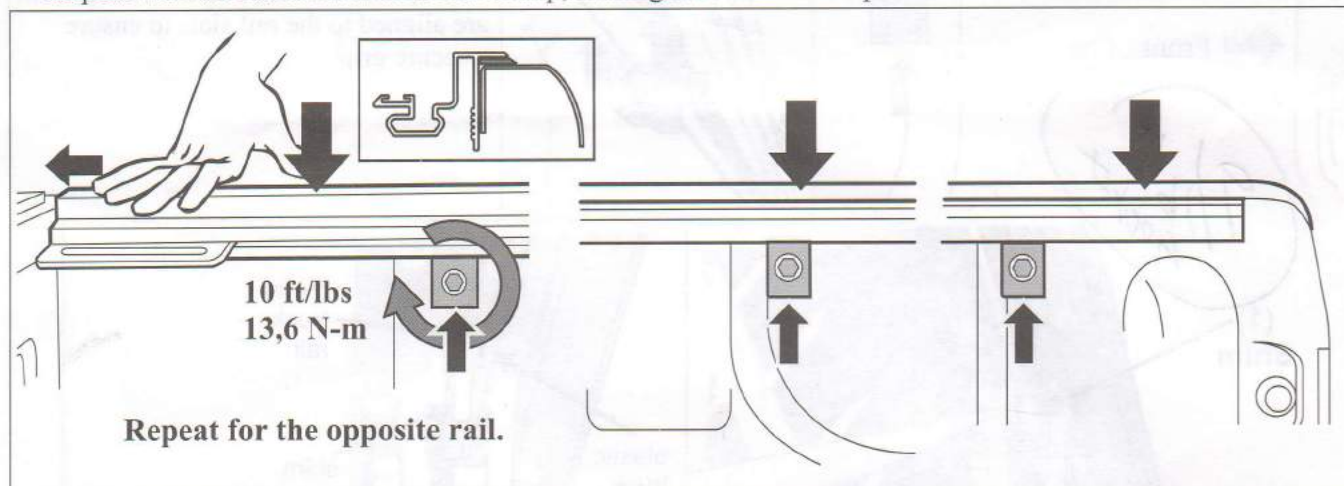
NOTE: When installing the rails for the 6' bed cover, the cover clamps must engage the rail bracket installed in step 4.

RAIL CLAMP INSTALLATION

13. Place the rear (tailgate) clamp and shim at the end of the rail approximately 6 inches or 152 mm from the tailgate. Hand tighten to keep in place.
Place the second/middle clamp and shim near the center of the rail. Hand tighten to keep in place.

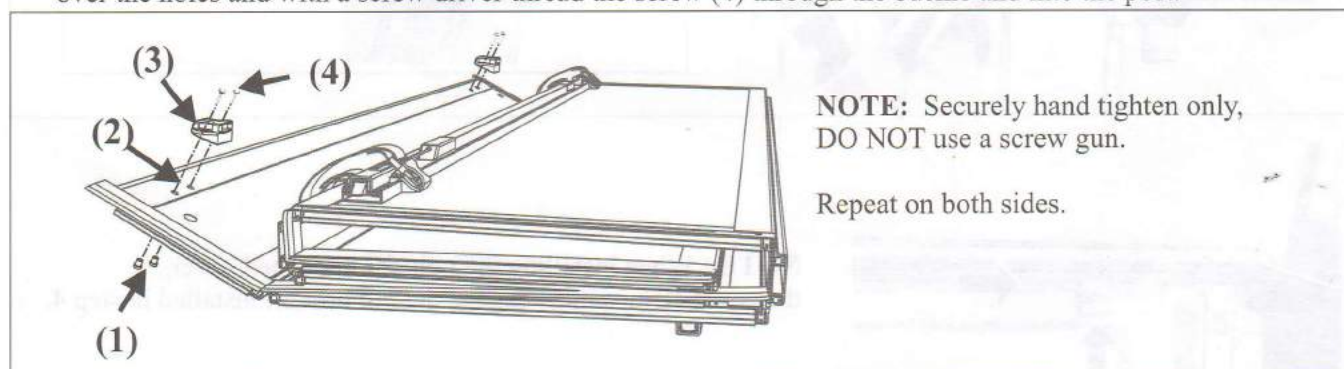


14. Starting with the front clamp, make sure the rail is pushed forward against the bulkhead, and square with the bed rail, apply downward pressure on the rail while tightening the bolt. Repeat with the middle and then rear clamp, making sure the rail is square and flat with the bed rail.



COVER TIE DOWN BUCKLE INSTALLATION

15. Push a threaded post (1) up from the bottom into the pre-drilled hole (2) in the cab panel. Place the buckle (3) over the holes and with a screw driver thread the screw (4) through the buckle and into the post.

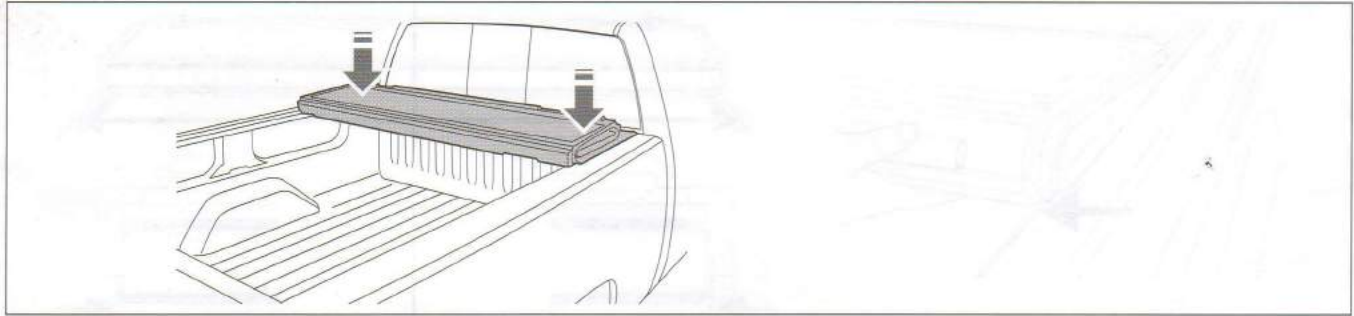


COVER INSTALLATION

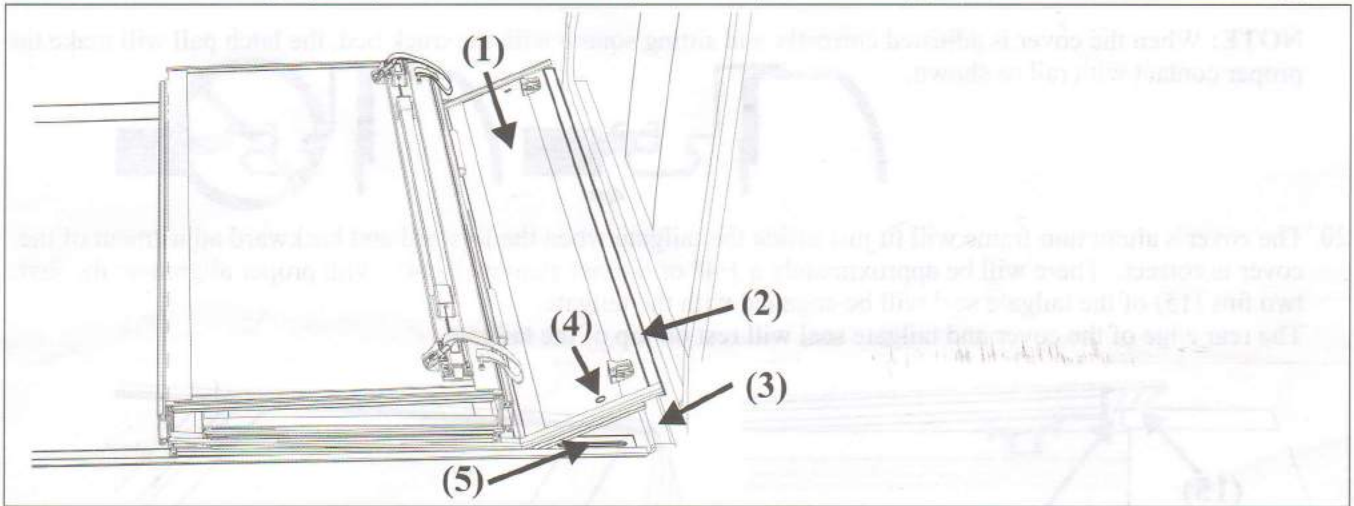
16. **NOTE:** Take care not to damage/deform all seals when installing the bed cover to the truck bed.

NOTE: Visually check to ensure the front frame is even on both sides.

Place cover over cab/front end of the truck bed.

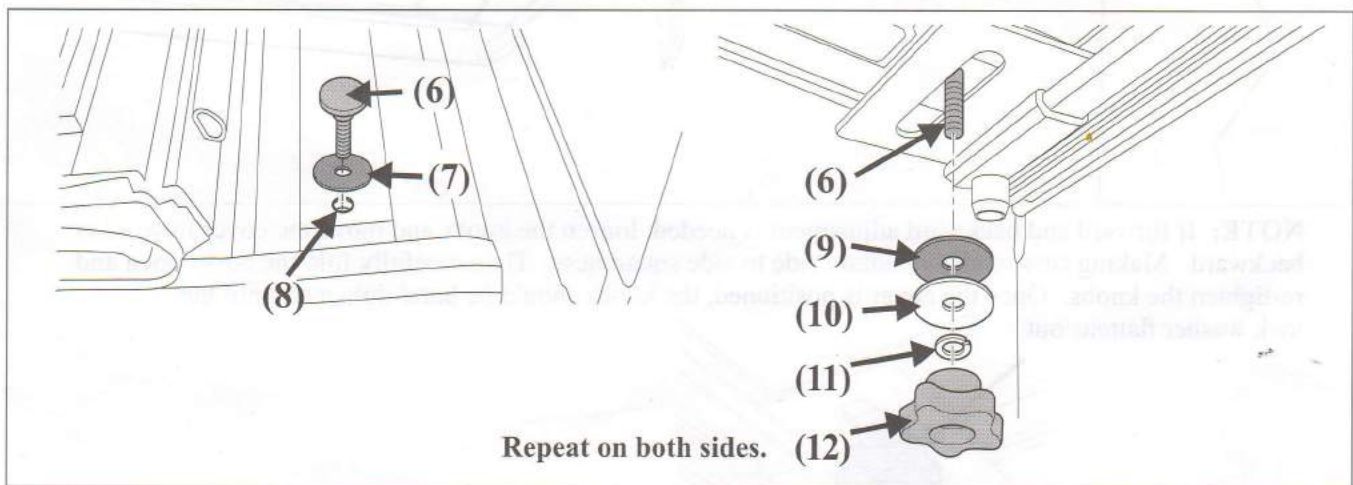


17. The smaller front/cab panel (1) faces forward. Align the cab panel seal (2) to sit on top of the bed bulkhead (3) and that it is setting squarely on the bed rails. Align the cab panel holes (4) with the slotted rail brackets (5).



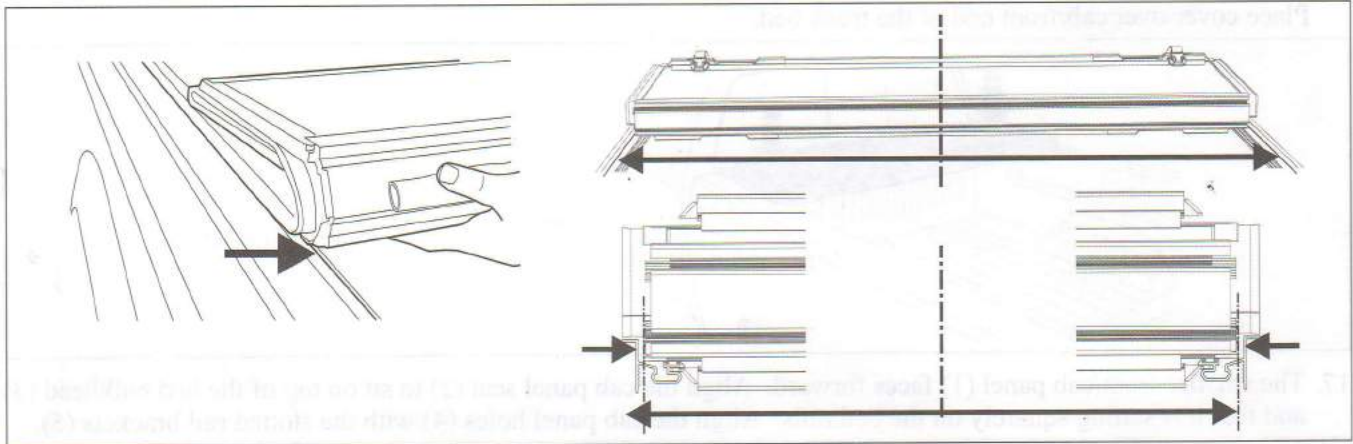
18. Insert the flat bolt (6) through a large rubber washer (7) and into the cab panel hole (8) and down through the slotted rail bracket.

From underneath the cover, attach the following to the large flat bolt (6) - large rubber washer (9), large metal washer (10), lock washer (11), knob (12). Hand tighten.



COVER INSTALLATION

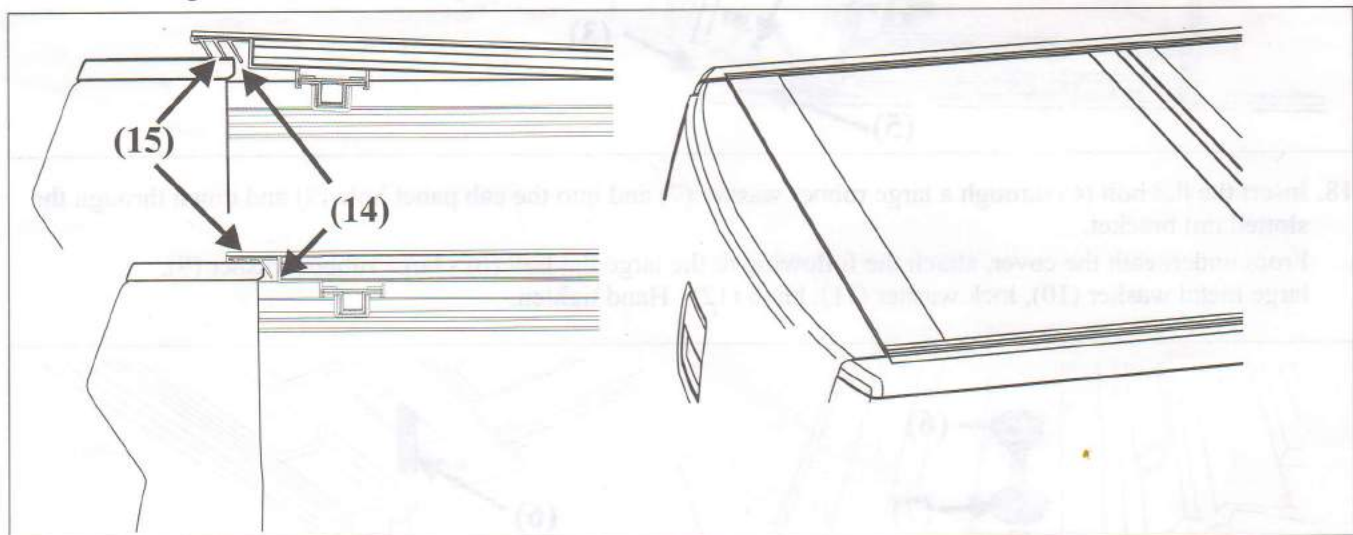
19. Unfold the cover towards the tailgate. Make sure the cover fits squarely between the rails. If it is not square, loosen the knobs, item (12) in step 18, and adjust the cover side to side. Then carefully fold the cover and re-tighten the knobs.



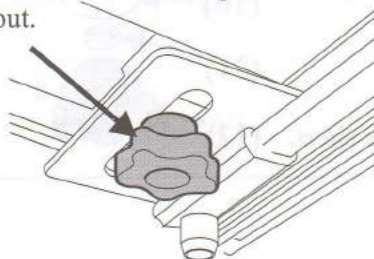
NOTE: When the cover is adjusted correctly and sitting square with the truck bed, the latch pull will make the proper contact with rail as shown.



20. The cover's aluminum frame will fit just inside the tailgate when the forward and backward adjustment of the cover is correct. There will be approximately a 1/4" or 6.4mm clearance (14). With proper alignment the first two fins (15) of the tailgate seal will be engaged with the tailgate. The rear edge of the cover and tailgate seal will rest on top of the tailgate.



NOTE: If forward and backward adjustment is needed, loosen the knobs and move the cover forward or backward. Making sure to also maintain side to side squareness. Then carefully fold the cover open and re-tighten the knobs. Once the cover is positioned, the knobs should be hand tightened until the lock washer flattens out.

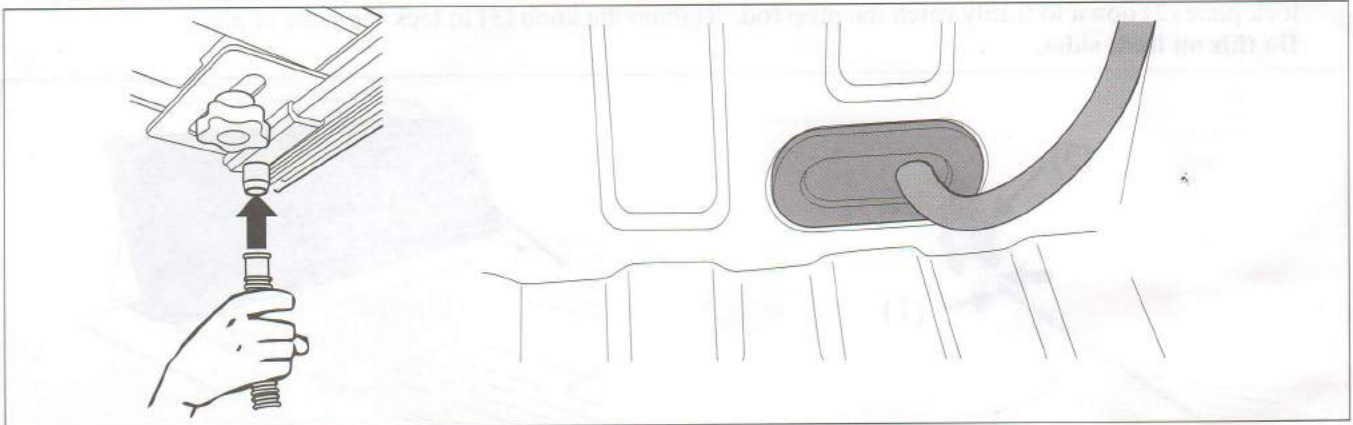


DRAIN HOSE INSTALLATION

21. Insert one end of the drain hose onto the cover rail drain nozzle.

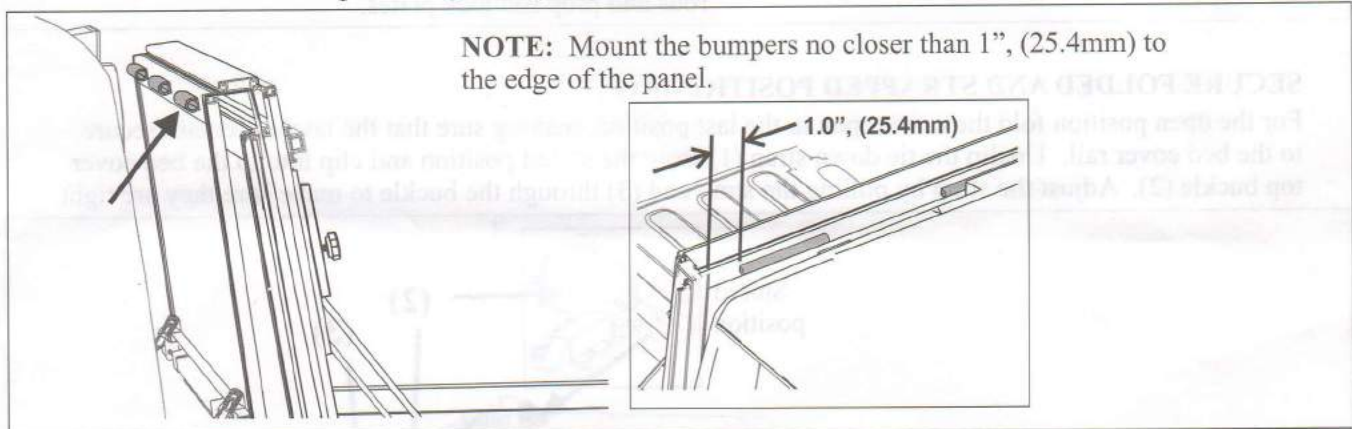
Route the other end of the drain hose out through the lower access hole in the bed liner.

Install drain hoses on both sides.



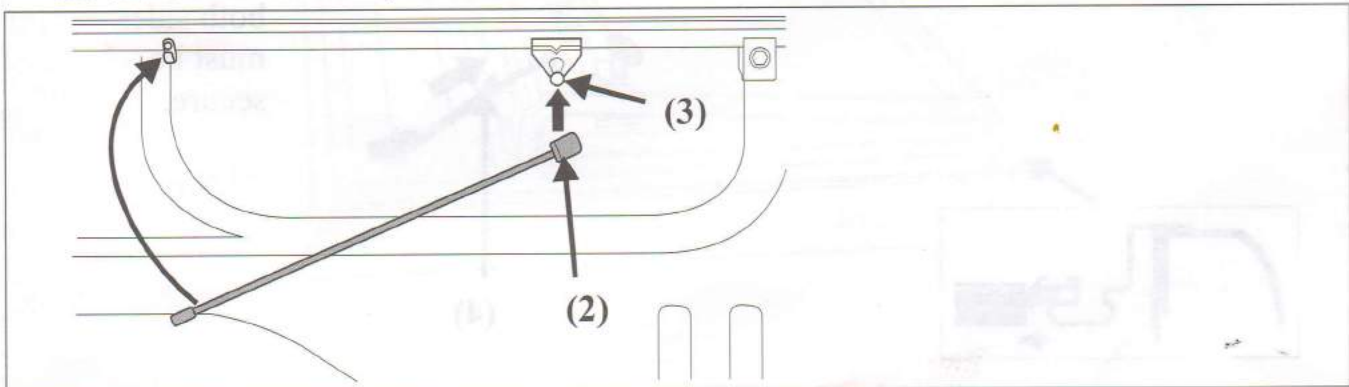
CAB BUMPER INSTALLATION

22. Install the three cab bumpers along the top edge of the cover where it meets the truck cab.



PROP ROD INSTALLATION

23. Install the prop rod by clipping the ballsocket end (1) over the ball mount (2) on the rail. The other end rests in the clip mounted to the rail.

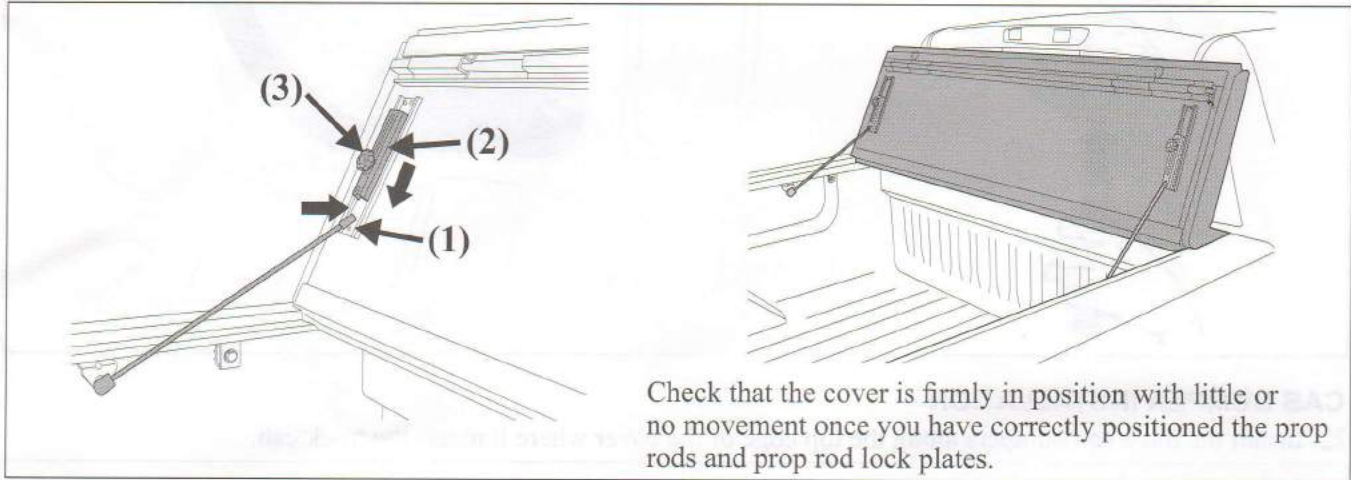


NOTE: PRIOR TO VEHICLE OPERATION THE BED COVER *MUST* BE PROPERLY SECURED.

SECURE PROP ROD POSITIONING

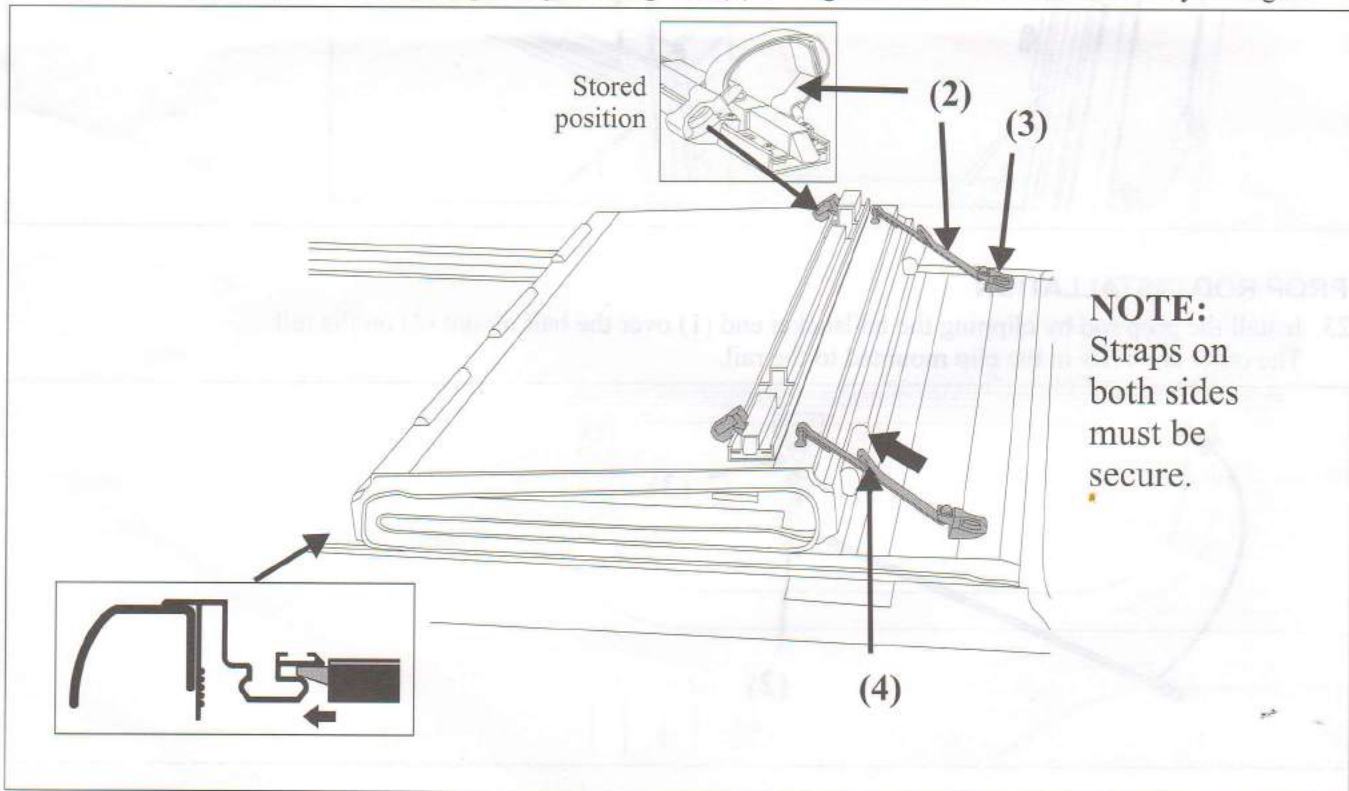
For the flipped up position fold the cover open and lift it forward until vertical or past 90 degrees toward the truck cab. Release the prop rod and fold it until it pushes firmly onto the vertical plate (1). Then slide the lock plate (2) down to firmly catch the prop rod. Tighten the knob (3) to lock the plate in place.

Do this on both sides.



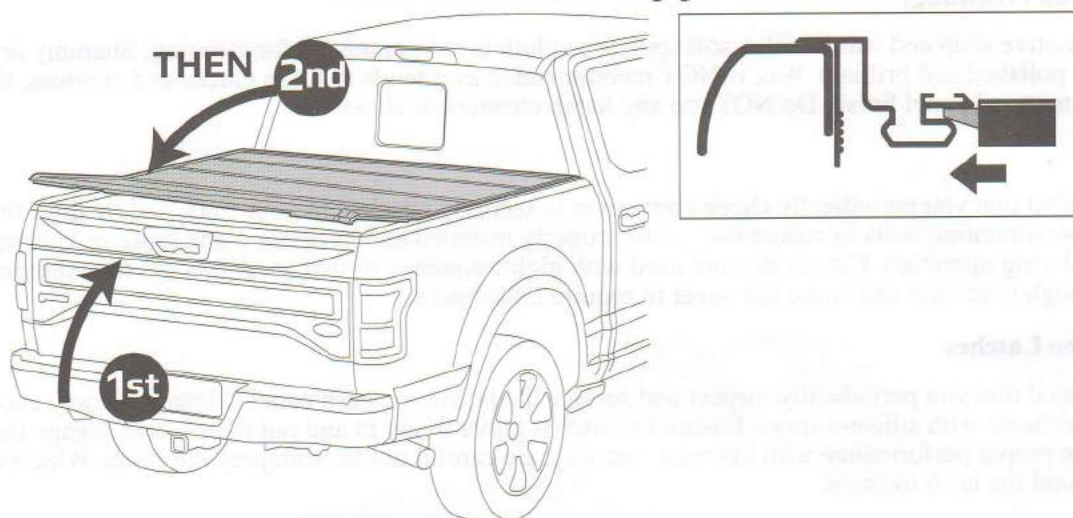
SECURE FOLDED AND STRAPPED POSITIONING

For the open position fold the cover open to the last position, making sure that the latches remain secure to the bed cover rail. Unclip the tie down strap (1) from the stored position and clip into to the bed cover top buckle (2). Adjust the strap by pulling the strap end (3) through the buckle to make sure they are tight.

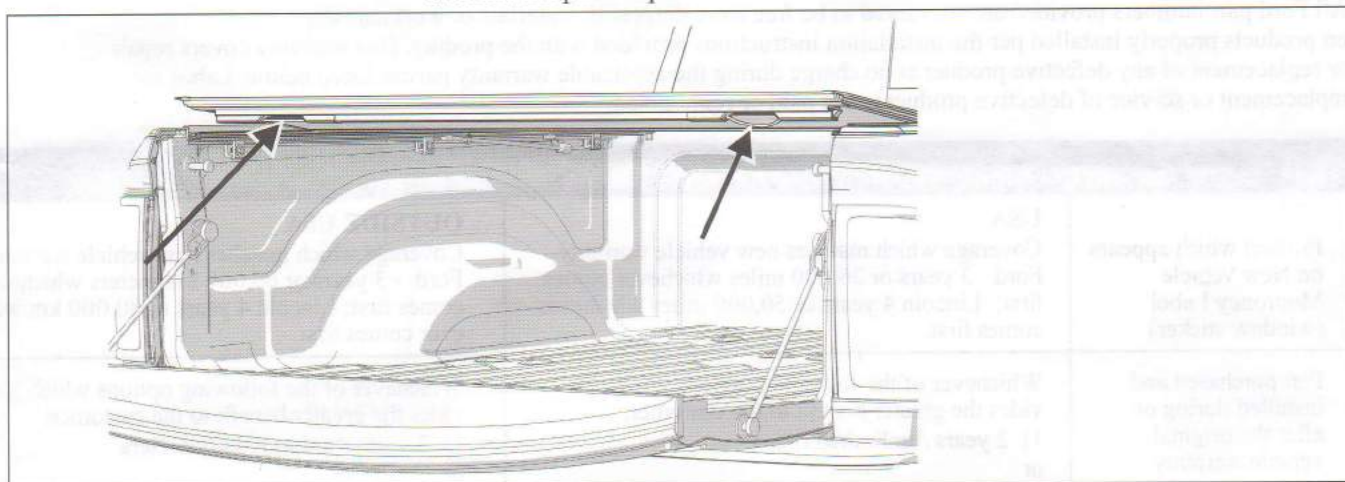


TAIL PANEL OPERATION

TO CLOSE THE TAIL PANEL WARNING- to avoid damage, always shut the tailgate before closing the cover.
DO NOT shut your tailgate when the rear panel of the cover is closed.
Assure that both latches engage.



TO OPEN THE TAIL PANEL Open the tailgate and reach under the panel for the release cable at either side of the panel housing. Pull down on either cable to release both rear latches and lift the panel open.



NOTE: DO NOT ATTEMPT TO DRIVE WITH THE TAIL PANEL IN A PARTIALLY OPEN POSITION.

Additional Important Operating Tips

The bed cover **MUST** be free of foreign material including snow and ice before opening panels.

Do NOT tow your vehicle from the rear with the bed cover on your truck.

Do NOT operate vehicle with objects on top of the cover.



Do NOT tow your vehicle from the rear with this cover on your truck.



Remove any snow or foreign matter before opening the cover.

FAILURE TO FOLLOW THESE CAUTIONS MAY RESULT IN SEVERE DAMAGE AND WILL VOID YOUR WARRANTY!

CARE AND MAINTENANCE

Cleaning the Top (Washing)

Standard automotive soap and water with a soft sponge or cloth is recommended for cleaning. Shammy dry to keep the finish polished and brilliant. Wax is NOT recommended as it tends to fill in cracks and crevices, which may affect the textured panel finish. Do NOT use any harsh cleaners or abrasives.

Maintenance

It is recommended that you periodically check your cover is securely attached to your truck bed. Inspect the clamps and front mounting bolts to ensure they were properly installed and have not come loose or knocked out of adjustment during operation. Covers that are used with high frequency or that are subject to the vibrations and impact from rough roadways can cause the cover to require adjustment.

Lubricating the Latches

It is recommended that you periodically inspect and service the latches on each panel. Clean away any excess dirt or grime and lubricate with silicone spray. Ensure the latches move freely in and out to properly engage the side rail and provide proper performance with optimum security. Be careful not to overspray the cover. Wipe away any excess around the latch location.

HARD ROLLING TONNEAU COVER BY LIMITED WARRANTY

All Ford part numbers provided are warranted to be free from defects in materials or workmanship on products properly installed per the installation instructions provided with the product. This warranty covers repair or replacement of any defective product at no charge during the applicable warranty period listed below. Labor for replacement or service of defective product is not paid or reimbursed.

WARRANTY PERIOD		
Product which appears on New Vehicle Monroney Label (window sticker)	USA Coverage which matches new vehicle warranty-- Ford - 3 years or 36,000 miles whichever comes first; Lincoln 4 years or 50,000 miles whichever comes first.	OUTSIDE USA Coverage which matches new vehicle warranty Ford - 3 years or 60,000 kilometers whichever comes first; Lincoln 4 years or 80,000 km which ever comes first
Part purchased and installed during or after the original vehicle warranty	Whichever of the following options which provides the greater benefit to the customer: 1) 2 years / unlimited miles or 2) The remainder of the new vehicle warranty	Whichever of the following options which provides the greater benefit to the customer: 1) 2 years / unlimited kilometers or 2) The remainder of the new vehicle warranty

This limited warranty does not cover any damage, defect or malfunction caused by misuse, abuse, accident, improper installation, modification or improper or lack of maintenance. Incidental and consequential damages are not recoverable under this warranty. This warranty offers you specific legal rights. You may have additional or other rights as which vary from state to state or province to province.

If you experience a warranty issue with this product please visit your Ford dealer. If the repair is covered by the warranty above and completed by the dealership, labor is also covered by Ford -- Ford Warranty and Policy -- Section 3.

Please note that replacement component parts are available to assist consumers and dealers to resolve warranty and non-warranty issues as quickly as possible.

Note to dealer: Ford dealers should contact by phone at 844-277-2622 and ask to speak to the Covers warranty administrator or by email to: Fordcare@truck-hero.com