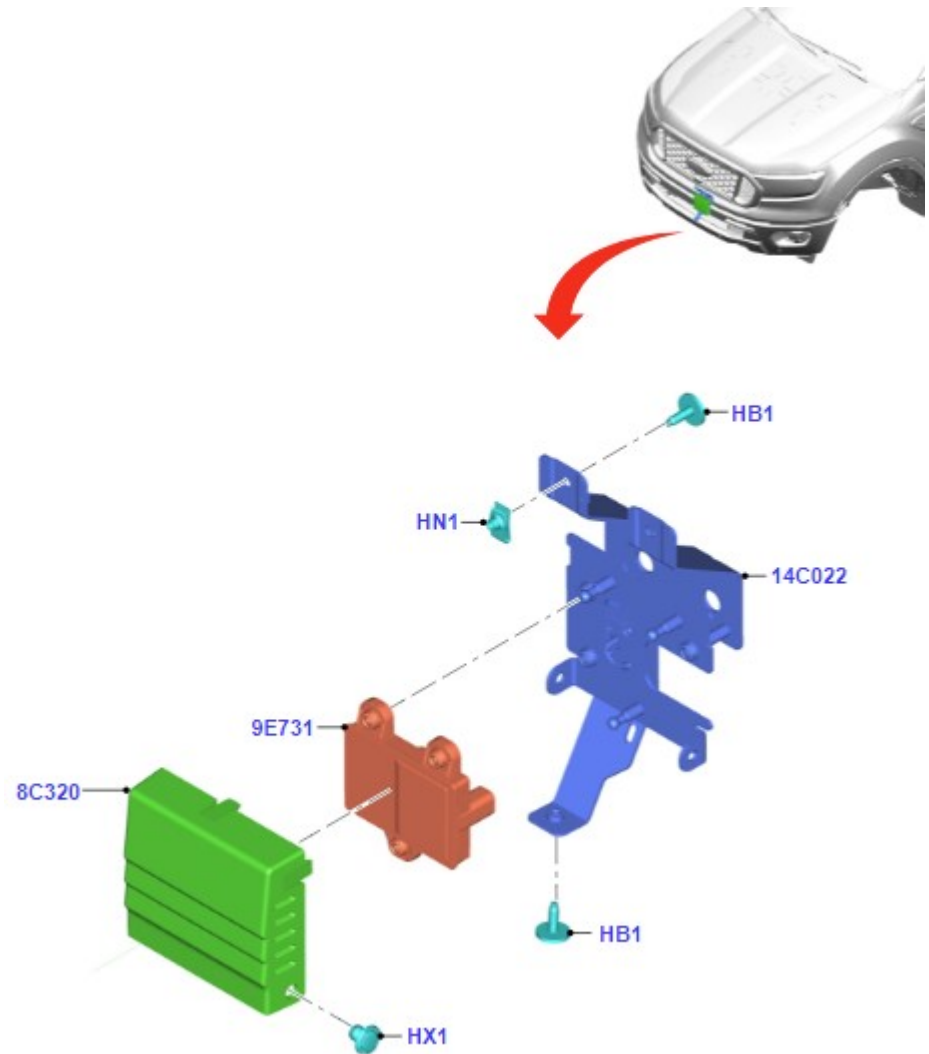
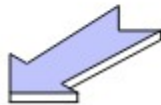
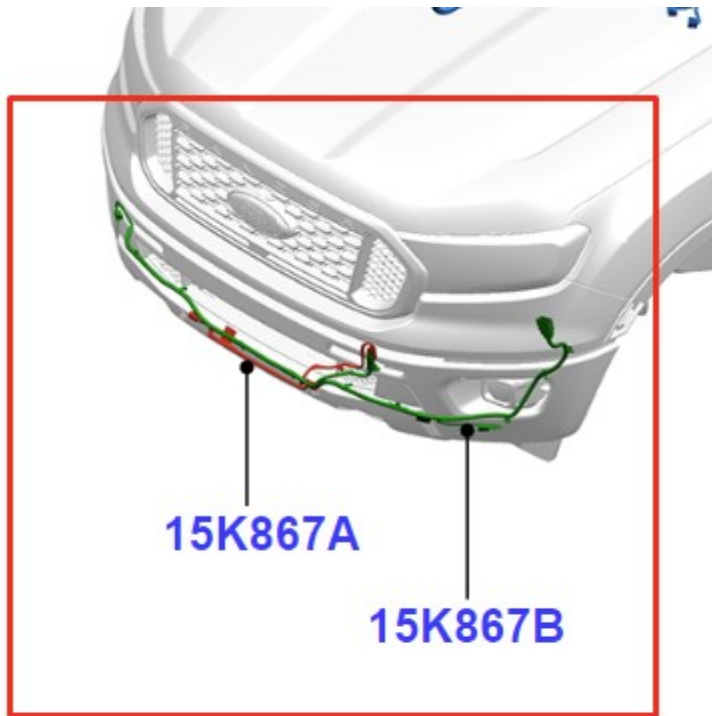
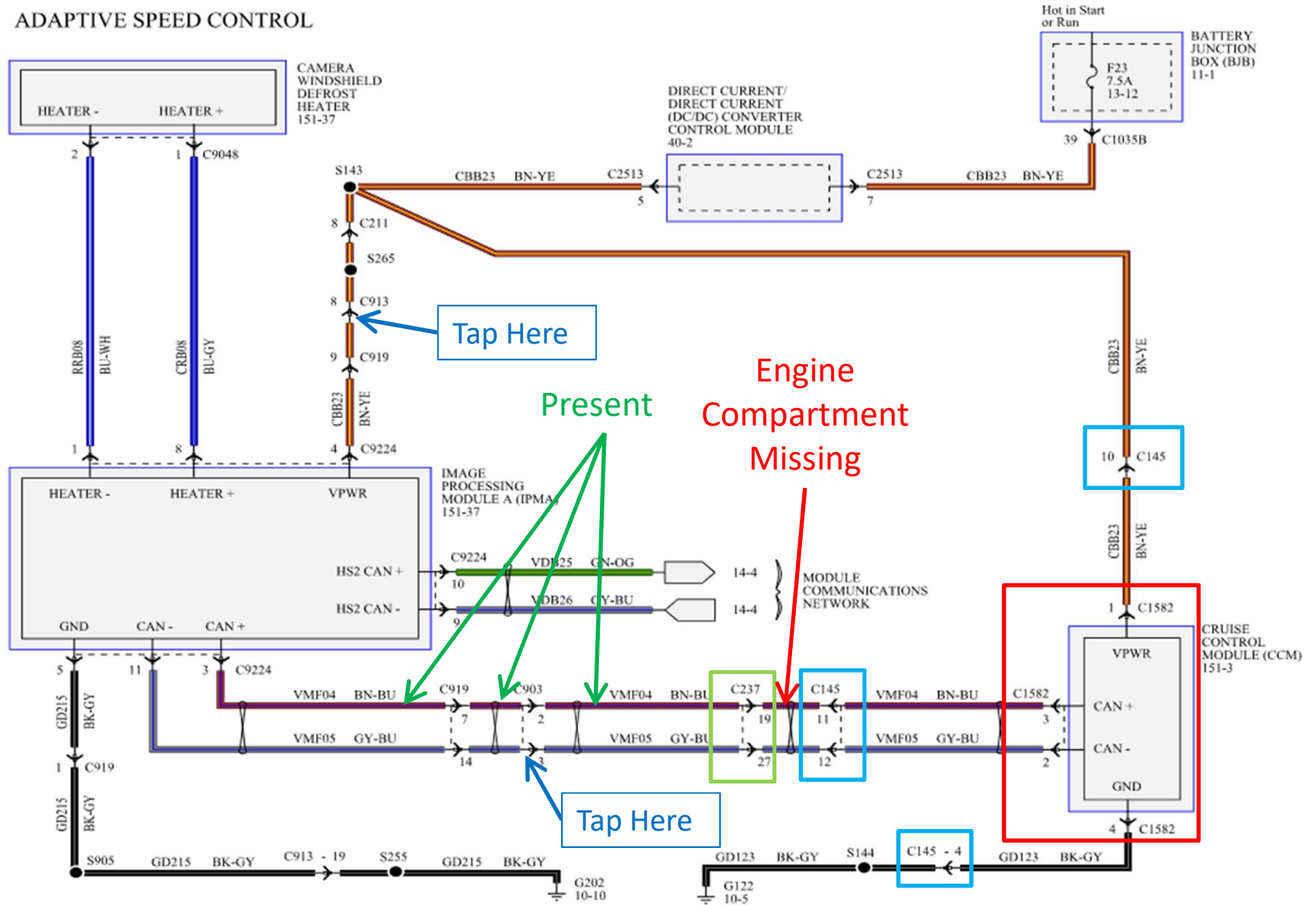
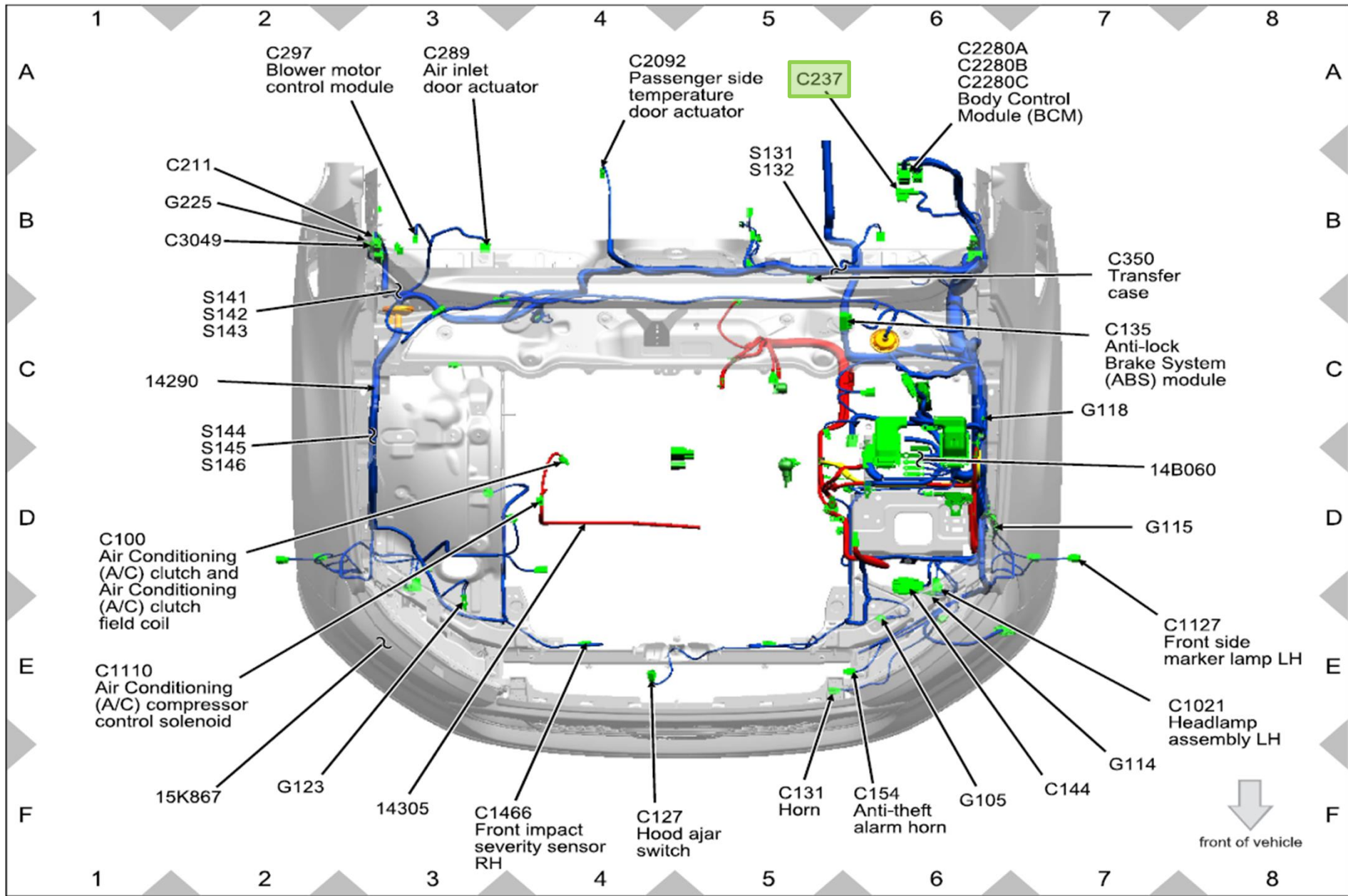


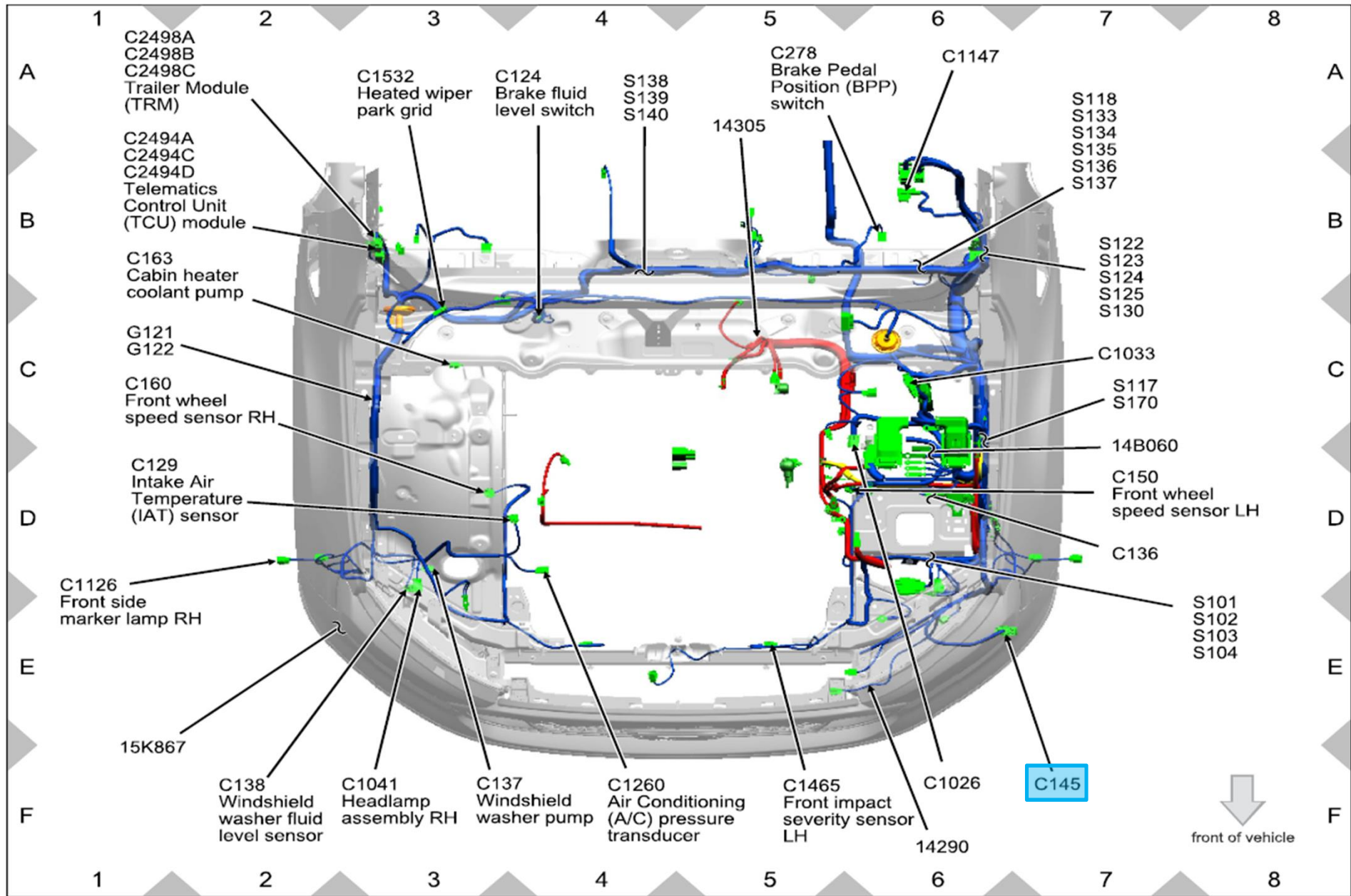
# CCM Module, Mount and Harness

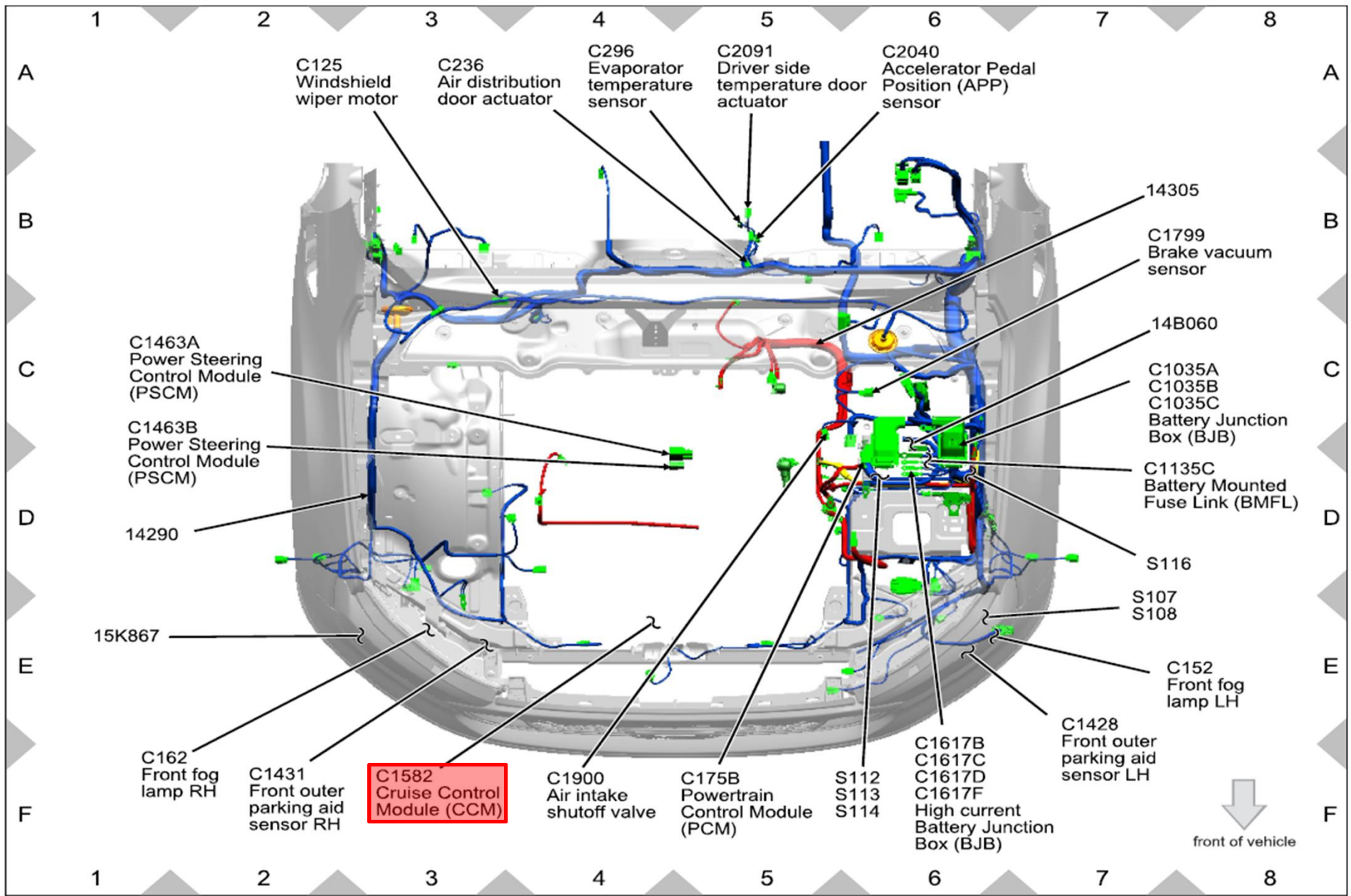


# ADAPTIVE SPEED CONTROL





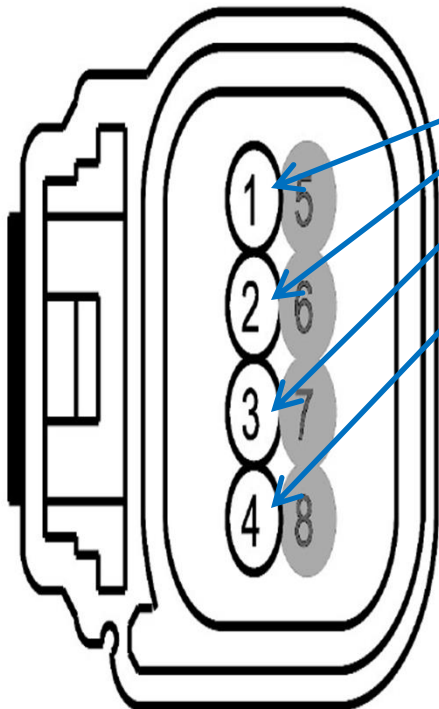




# C1582 CCM Connector

<b>Connector:</b> C1582	<b>Description</b> CRUISE CONTROL MODULE (CCM)	<b>Color</b> BK	<b>Harness</b> 15K867	<b>Base Part #</b> part# N/A	<b>Service Pigtail</b> See Below
----------------------------	--	--------------------	--------------------------	---------------------------------	-------------------------------------

[Check for Terminal Part Numbers](#)



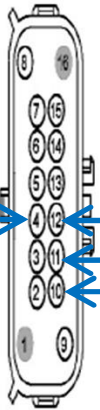
Pin	Circuit	Gauge	Circuit Function	Qualifier
1	CBB23 (BN-YE)	18	FUSE - 23 OR CIRCUIT BREAKER	
2	VMF05 (GY-BU)	20	CTRL MOD. - FORWARD SENSING # FORWARD LOOKING RADAR CAN BUS LOW	
3	VMF04 (BN-BU)	20	CTRL MOD. - FORWARD SENSING # FORWARD LOOKING RADAR CAN BUS HIGH	
4	GD123 (BK-GY)	20	GROUND - FENDER FRONT RIGHT	
5	*	*	Not Used	
6	*	*	Not Used	
7	*	*	Not Used	
8	*	*	Not Used	



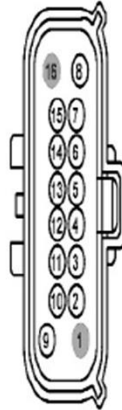
# C145 Bumper Harness

Inline C145	Description	Color	Base Part #	Service Pigtail
	INLINE			See Below

**MALE**  
Harness 15K867

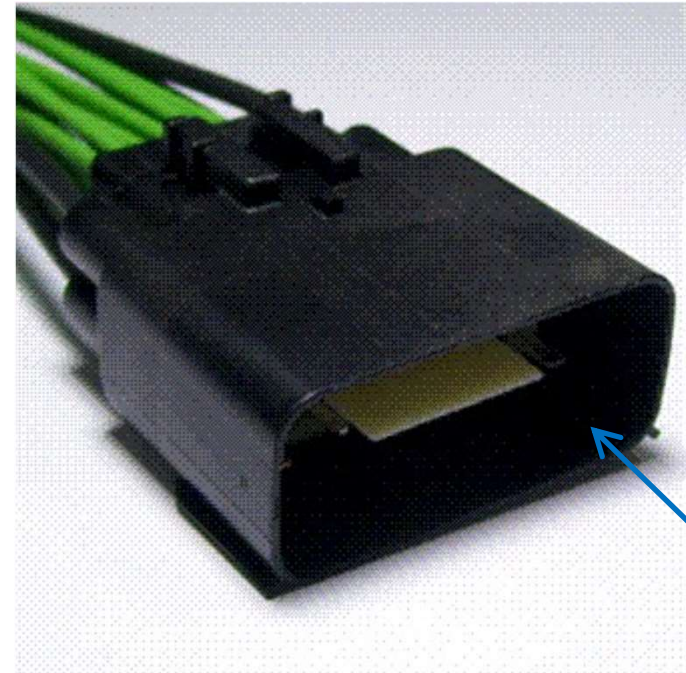


**FEMALE**  
Harness 14290



[Check for Terminal Part Numbers](#)

Pin	Circuit	Gauge	Qualifier	Pin	Circuit	Gauge	Qualifier
1	*	*		1	*	*	
2	LMP06 (VT-GY)	20		2	LMP06 (VT-GY)	20	
3	VMP11 (BU-GN)	20		3	VMP11 (BU-GN)	20	
4	GD123 (BK-GY)	20		4	GD123 (BK-GY)	20	
5	VMP10 (WH-BU)	20		5	VMP10 (WH-BU)	20	
6	VMP12 (BU-GY)	20		6	VMP12 (BU-GY)	20	
7	VMP13 (BU-OG)	20		7	VMP13 (BU-OG)	20	
8	GD121 (BK-YE)	18		8	GD121 (BK-YE)	18	
9	GD123 (BK-GY)	18		9	GD123 (BK-GY)	18	
10	CBB23 (BN-YE)	18		10	CBB23 (BN-YE)	18	
11	VMF04 (BN-BU)	20		11	VMF04 (BN-BU)	20	
12	VMF05 (GY-BU)	20		12	VMF05 (GY-BU)	20	
13	RMP06 (YE-OG)	20		13	RMP06 (YE-OG)	20	
14	CLF29 (BN)	16		14	CLF29 (BN)	16	
15	CLF34 (YE-OG)	16		15	CLF34 (YE-OG)	16	
16	*	*		16	*	*	

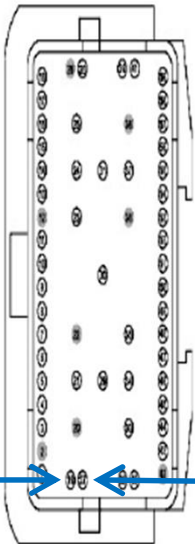


1

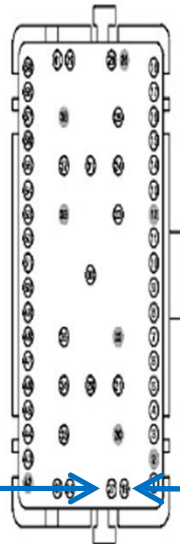
# C237 Firewall Connector

Inline C237	Description INLINE	Color BK	Base Part #	Service Pigtail Not Available
----------------	-----------------------	-------------	-------------	----------------------------------

**MALE**  
Harness 14401



**FEMALE**  
Harness 14290

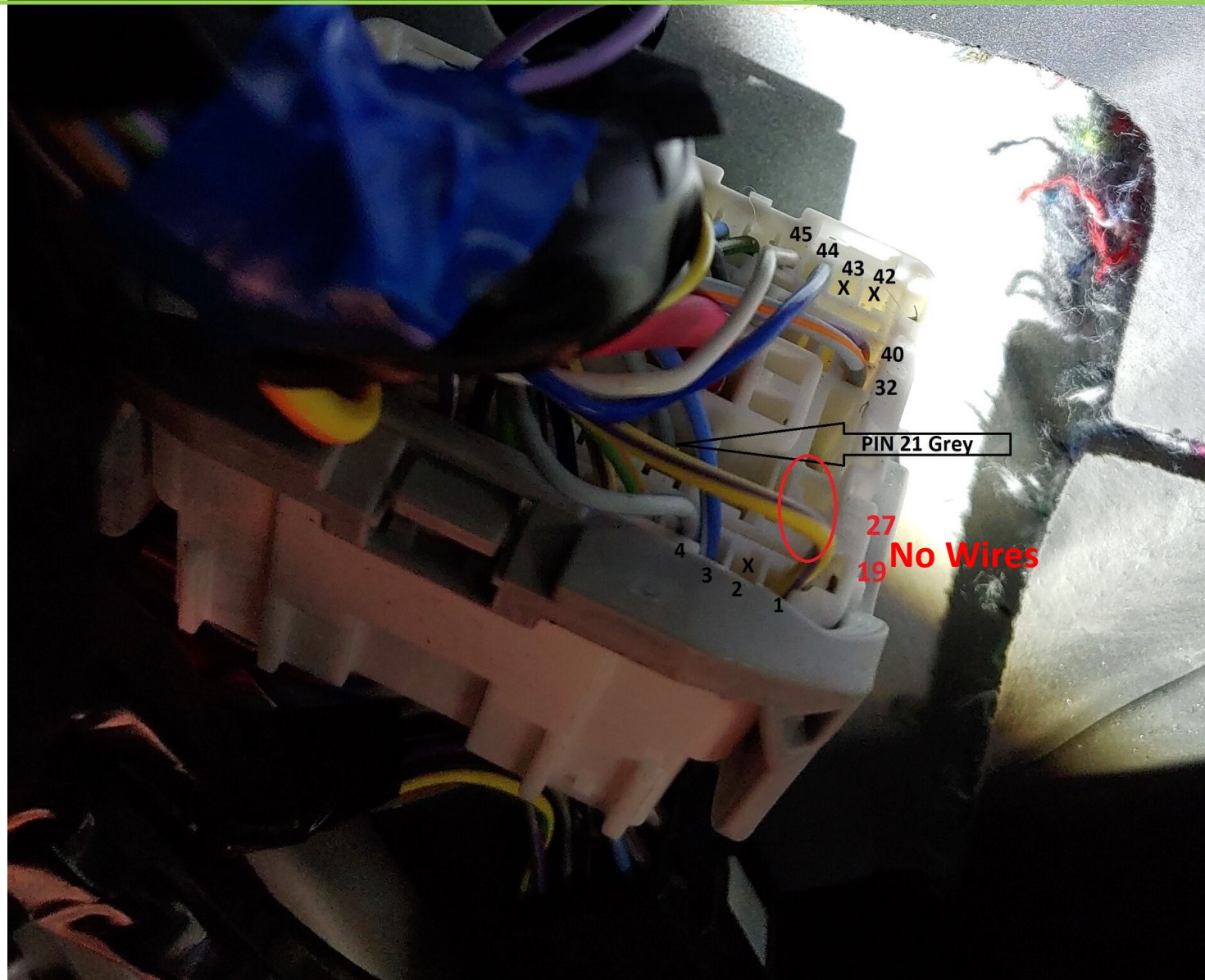


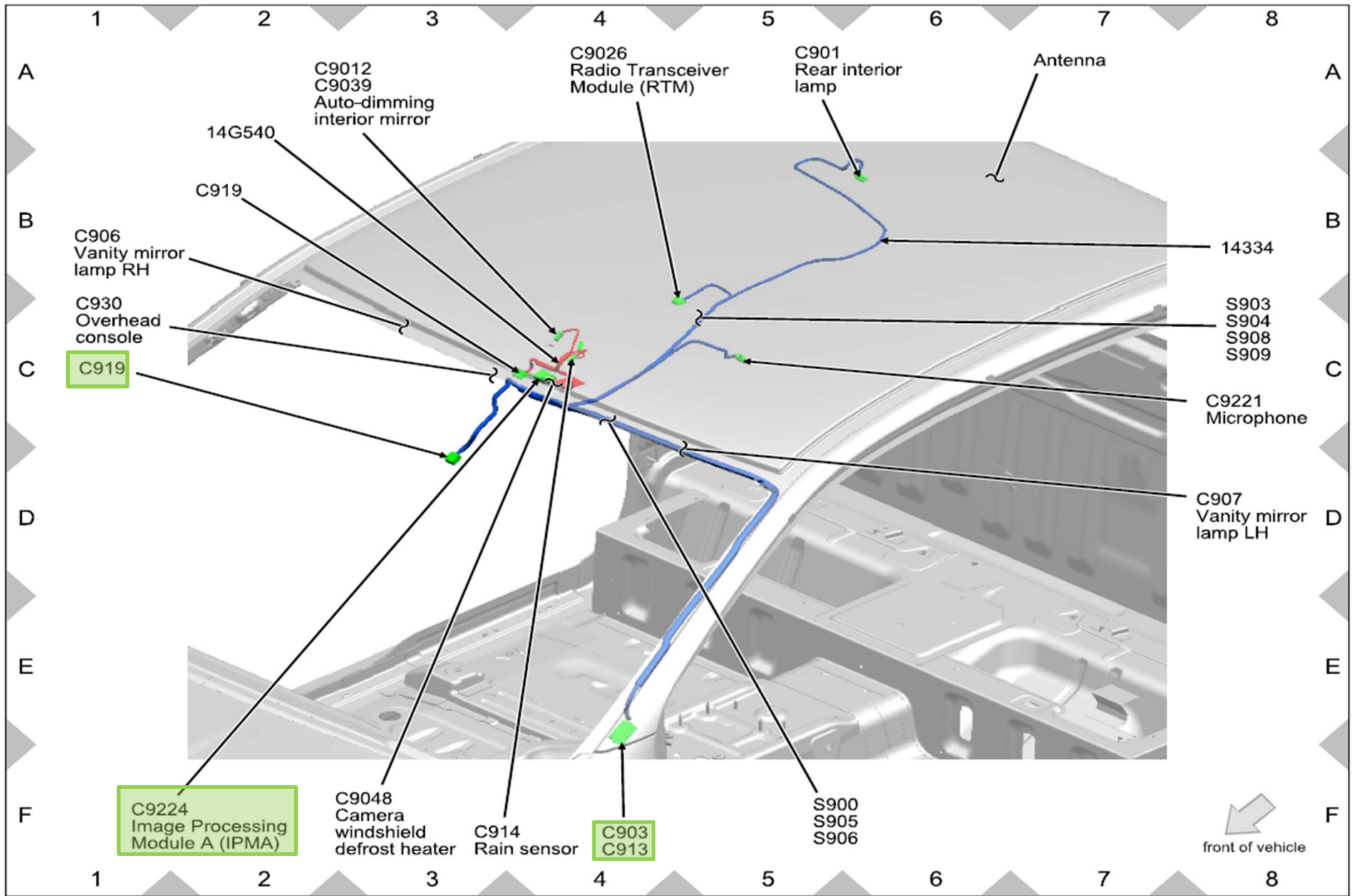
Check for Terminal Part Numbers

Pin	Circuit	Gauge	Qualifier
19	VMF04 (BN-BU)	22	
20	*	*	
21	CRD17 (GY)	20	
22	*	*	
23	SBB65 (RD)	14	
24	SBB80 (VT-RD)	14	
25	CDC35 (BU-WH)	20	
26	*	*	
27	VMF05 (GY-BU)	22	
28	CRB02 (BU-BN)	22	

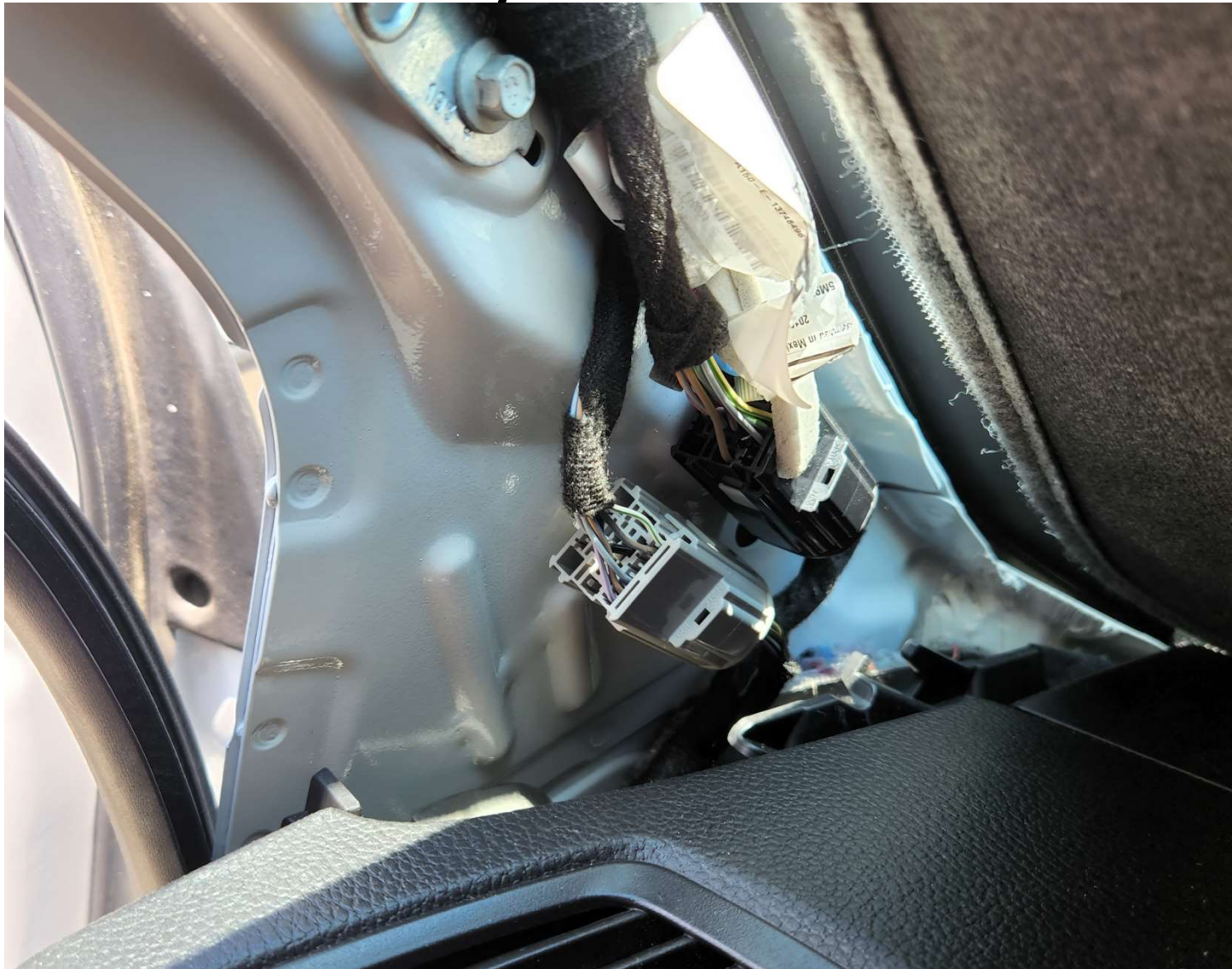
Pin	Circuit	Gauge	Qualifier
19	VMF04 (BN-BU)	20	
20	*	*	
21	CRD17 (GY)	20	
22	*	*	
23	SBB65 (RD)	14	
24	SBB80 (VT-RD)	14	
25	CDC35 (BU-WH)	20	
26	*	*	
27	VMF05 (GY-BU)	20	
28	CRB02 (BU-BN)	20	

# C237 Firewall Connector

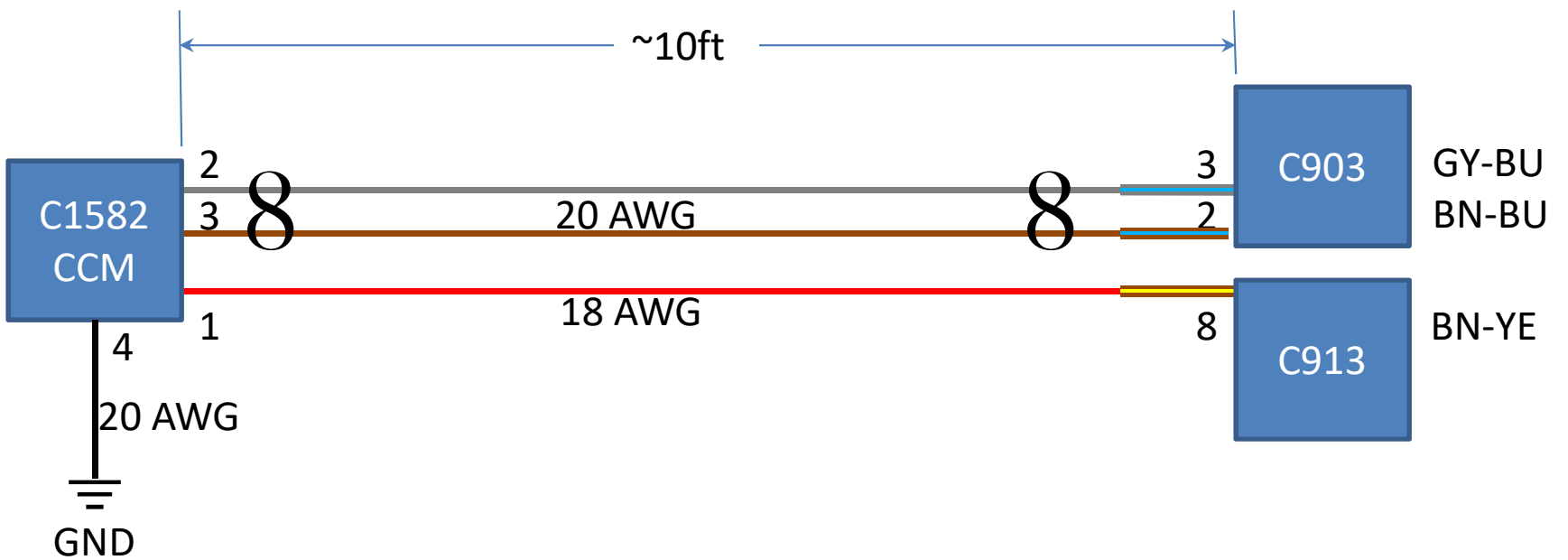




# C903/913 A-Pillar



# CCM Harness



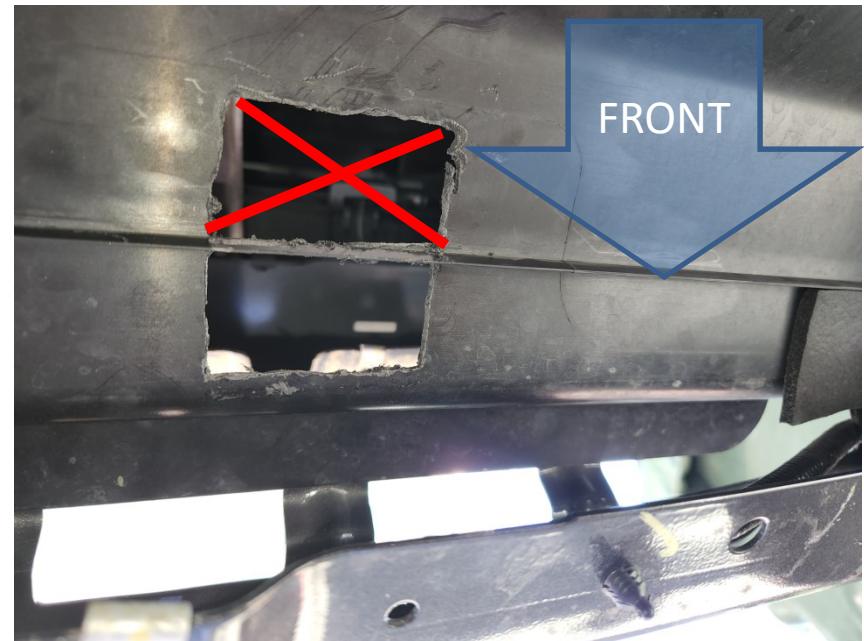
# Bracket Install

- Remove Lower Bumper Valance



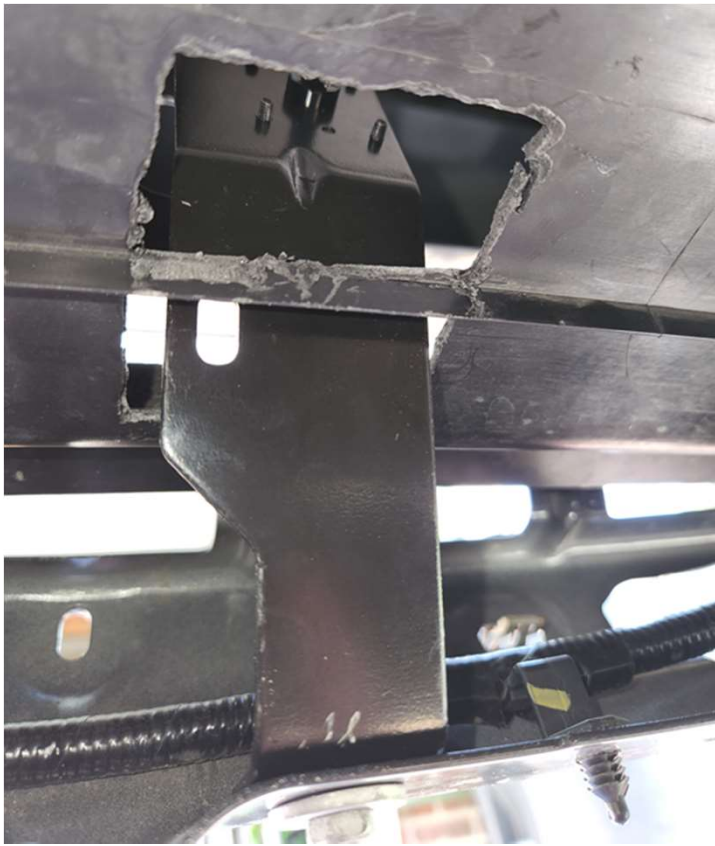
# Bracket Install

- Cut a hole in the plastic air baffle
  - In front of the rib



# Bracket Install

- Installed



# Bracket Install

- Cut foam gasket



# Bracket Install

- Complete



# Bracket Install

- Complete



# Harness Routing

- Run Harness down to the existing harness running along the bumper

