

1999

B-SERIES TRUCKS



mazda

Get in. Be moved.



While the other kids were taking afternoon naps, you were outside with your toy trucks, climbing hills you made in your father's perfectly manicured lawn. Before your friends had their training wheels off, you were jumping curbs on your BMX. And the mountain bike's inventors sure had you in mind. While others hibernate in winter, you see it as an opportunity to fire up the snowmobile or grab your snowboard. And when the weekend finally comes, you're outta here. So your truck better be able to take it. For you, we build the Mazda B-Series. Rugged trucks to carry your bikes, pull your boat, look great and not break a sweat doing it. Multiple body styles. Three engines. But you're a player. You want the facts. Read on. At Mazda, we believe driving is expression, exhilaration, liberation. We build trucks to capture that spirit and carry you away.



Get in.

In this instance, "open wide" sounds pretty good.



Be moved.



Our advice: Buckle up and hold on.

#4000 4x4 SE Cab Plus 4 in Torredor Red Metallic



The only import-brand compact pickup with 4 doors.

82500 SE Cab Plus 4 in Harvest Gold Metallic shown with accessory bedliner



When you're ready to head out, you don't want anything to get between you and the good times. Including loading your truck. We hear you. That's why we've introduced our new Cab Plus 4, the only import-brand compact pickup with 4 doors. Inside, it's our roomy Cab Plus, now with super-accessible space for lots of extra gear or two more friends. The Cab Plus 4 is just one of a complete line of tough Mazda Trucks. How tough? Try front frame rails that are full-box-section, not U-section, for exceptional chassis stiffness and a great ride. Independent, double-wishbone front suspension with gas-charged shock absorbers and coil springs on 4x2, tough torsion bars on 4x4, to keep your act together on road or off. Front stabilizer bar. Rock-and-pinion steering, power-assisted so you don't have to do all the work. Ready to rock? Our Trucks are.



You'd better believe you can get this tough Mazda Truck the way you like it. Top row: B2500 SR Regular Cab in Oxford White; B2500 SE Regular Cab in Amazon Green Metallic. Middle row: B2500 SE Cab Plus in Harvest Gold Metallic; B3000 SE Cab Plus 4 in Medium Platinum Metallic. Bottom row: B3000 4x4 SE Regular Cab in Toreador Red Metallic; B4000 4x4 SE Cab Plus 4 in Black. All with lots of equipment, standard features like rear-wheel ABS and a welded double-wall cargo bed.

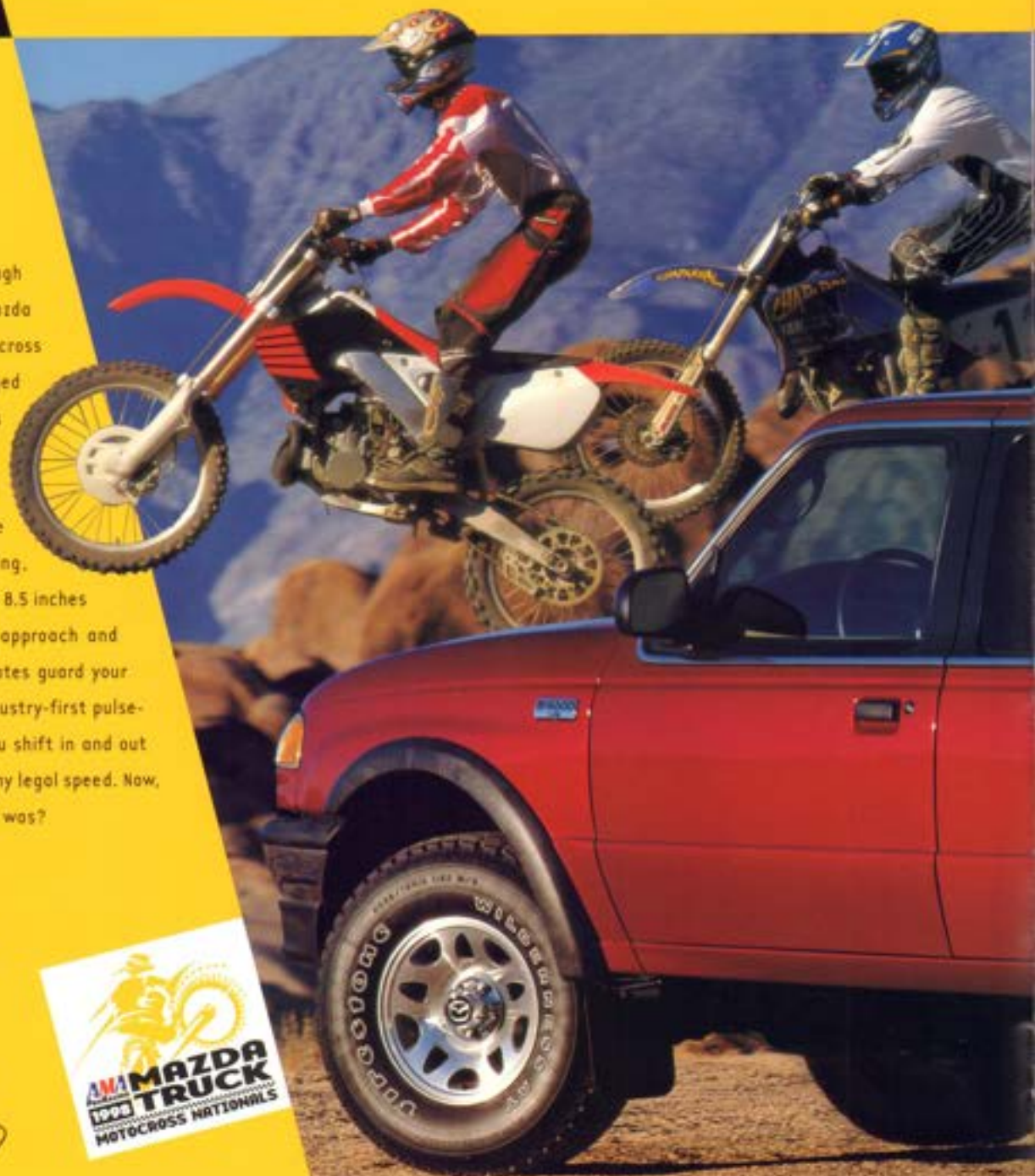
The company we keep says it all.

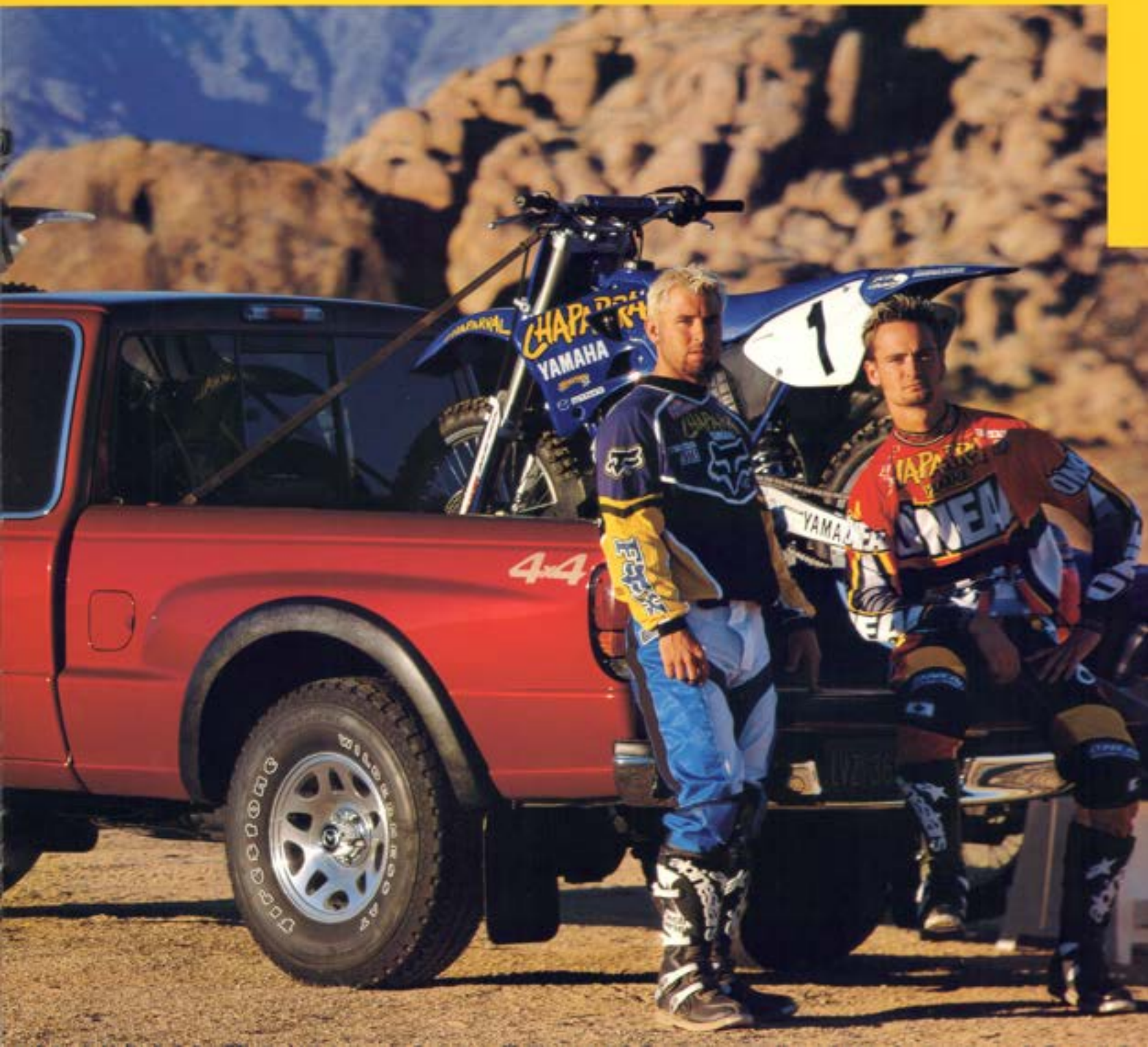
34000 4x4 SE Cab Plus 4 in Toreador Red Metallic

Mazda makes the only trucks tough enough to sponsor the AMA/Mazda Truck Motocross Nationals. Motocross riders demand the same rugged dependability in their trucks as in their bikes, and why should you settle for any less? So when you get the urge to leave the road and do a little rock crawling, do it in a Mazda 4x4. It has up to 8.5 inches of ground clearance and high approach and departure angles. Steel skid plates guard your oil pan and gearbox. And an industry-first pulse-vacuum hub-lock design lets you shift in and out of 4-wheel drive on the fly, at any legal speed. Now, where'd you say that trailhead was?



*Jeremy McGrath and Jimmy Button,
top riders in the AMA/Mazda Truck
Motocross Nationals.*





Room for everything is what it's all about.





8400 4x4 SE Cab Plus 4 in tan cloth with optional 5-speed automatic transmission.



Sure, your first priority is getting where you want to go. But why not be comfortable? Mazda Trucks have an overall feel of fit and quality that puts a lot of cars to shame. There's room to stretch out, and places to put stuff. And you want to know what's going on with your Truck, so in addition to the usual instruments and warning lights, you'll also find a voltmeter and oil-pressure gauge. SE models add a tachometer and come with an AM/FM/CD stereo. Turn it up.





You say you want the take-no-prisoners look and ground clearance of a 4x4, but don't need 4-wheel drive? Here's your answer—and you don't have to buy a lift kit. It's our B3000 4x2 SE Cab Plus with a special Troy Lee Appearance Package. You get Troy Lee 16-inch wheels, graphics, lifted 4x4 look and a custom interior with on attitude. This package will be available in spring '99 and will also be offered on other trim levels. It's a look that matches the spirit of the AMA/Mazda Truck Motocross Nationals, and it'll look even more



impressive with a couple of bikes in back, or maybe an ATV or WaveRunner. Troy Lee Designs creates the hottest gear around for the world's fastest racers. You get the idea.

Troy Lee Designs



Our Troy Lee Auto Show Concept Truck inspired the production Troy Lee Appearance Package.

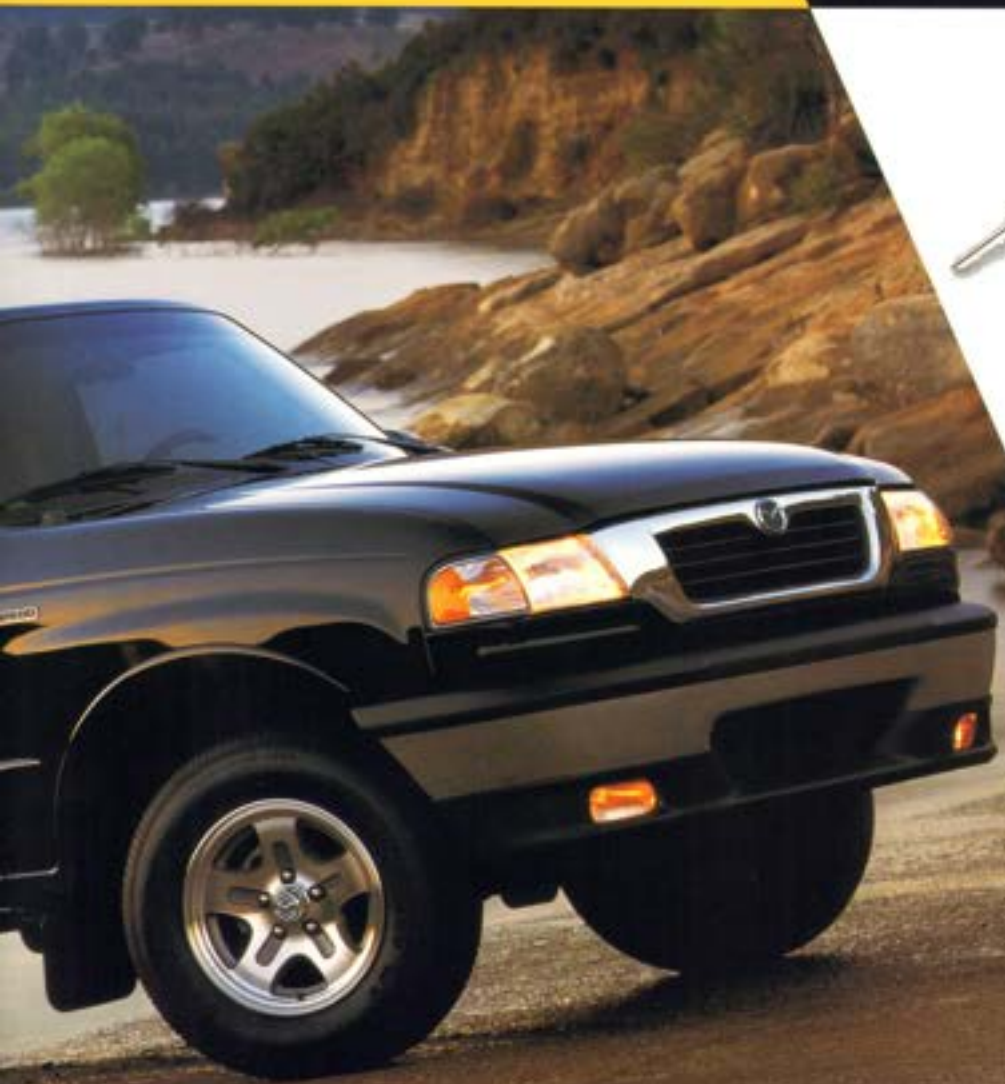
Track or trail, you're not going to hold back. We figured that.

B4000 4x4 SE Cab Plus 4 in Oxford White



You make your weekends count.





Maybe you head for the lake. Or the back country ATV area. The mountains. Anywhere else but here. Friday night, Saturday morning, you're ready to go, and you take your fun with you. So what your truck can carry or tow isn't just important. It's crucial. And Mazda Trucks can haul. Depending on the configuration or equipment you choose, you can tow up to 6000 pounds—more than with any Tacoma or Frontier. Or load in a couple of dirt bikes and all your gear. The chart below gives you the facts and figures. You bring the map.

B2500 SE Regular Cab in Black shows with optional Convenience Package and accessory fog lights

PAYLOAD/TRAILER WEIGHTS (Lb)

		Axle Trans. Ratio	REGULAR CAB		CAB PLUS/CAB PLUS 4		
			Max. Payload/GVW	Max. Trailer Wt./GCWR	Max. Payload/GVW	Max. Trailer Wt./GCWR	
B2500	4x2	M5	4.10	3260/4320	1600/4800	3260/4760	1440/4800
	4x4	M5	4.10	3260/4320	2340/5500	—	—
B5000	4x2	M5	3.73	—	—	3620/4980	2720/6000
	4x4	M5	3.73	—	—	3620/4980	4000/7500
	4x4	M5	3.73	3540/4880	3400/6000	3520/5080	3200/7000
	4x4	M4	4.10	3540/4880	4340/8000	3520/5080	4200/8000
B4000	4x2	M5	3.55	1840/4740	3440/7000	—	—
	4x4	M5	3.55	1840/4740	4000/9500	3620/4980	5980/9500
	4x4	M5	3.73	—	—	3520/4980	3200/7000
	4x4	M5	3.73	—	—	3520/4980	5660/9500

GVWR = Gross Vehicle Weight Rating, GVW = Gross Combined Weight Rating, M5 = 5-speed manual, M4 = 4-speed automatic, M3 = 3-speed automatic



The B-Series can tow up to 6000 pounds. Which way to the dock?

Payload: Payload weights shown are maximums and must be reduced by the weight of any passengers or optional equipment. **Trailer Weight:** Trailer weights shown are maximums and must be reduced by the weight of any passengers, cargo, hitch, or optional equipment in the towing vehicle. The following equipment may also be required: load-carrying hitch for trailers under 2,000 lb and load-equalizing hitch for trailers over 2,000 lb. Towing a trailer will have an effect on the vehicle's handling, braking, durability, performance, and driving economy. For specific information on recommended or required equipment, see your Mazda Dealer. Hitches are available through manufacturers other than Mazda.

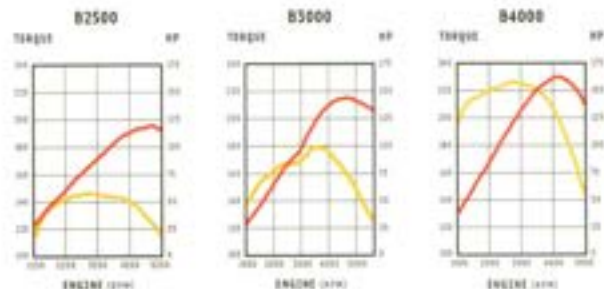


Mazda Trucks are not just rugged, they're powerful too. You can choose from three engines, all specifically designed for trucks and developing lots of torque at low rpm. They're also built for reliability and easy maintenance, with electronic fuel injection and 100,000-mile intervals between traditional tune-ups.

For transmissions, a 5-speed stick shift is standard equipment on most models. An automatic is a better choice for towing, and you can opt for the 4-speed on the B2500 and B3000; for the B4000, a 5-speed version takes full advantage of the extra power and torque. Both automatics are electronically controlled.

ENGINES	B2500	B3000	B4000
Displacement and type	2.5L SOHC I-4	3.0L OHV V6	4.0L OHV V6
Bore and stroke (in)	3.78 x 3.40	3.50 x 3.34	3.95 x 3.32
Compression ratio	9.1:1	9.1:1	9.1:1
Electronic ignition system	Distributorless	Distributorless	Distributorless
Electronic fuel injection	Multipoint	Multipoint	Multipoint
Recommended fuel	Regular unleaded gasoline	FFV* Regular unleaded gasoline or E85	Regular unleaded gasoline
EPA estimated fuel economy, city/hwy mpg	4x2 Man. 27/27 4x2 Auto. 26/25	4x2 Man. 18/23* 4x2 Auto. 17/22*	4x2 Man. 17/22 4x4 Man. 17/20 4x4 Auto. 16/20

*Flexible Fuel Vehicle. Data for gasoline-fueled engine shows, fueling with 100% ethanol, (E85 gasoline) will increase horsepower and torque, and decrease fuel economy. See your Mazda Dealer for details.



2.5-liter 4-cylinder
119 hp @ 5000 rpm
144 lb-ft @ 3000 rpm

3.0-liter FFV* V6
143 hp @ 4750 rpm
180 lb-ft @ 3750 rpm

4.0-liter V6
188 hp @ 4200 rpm
225 lb-ft @ 2750 rpm

— TORQUE — HORSEPOWER

SAE Net horsepower and torque curves for all three engines are shown here. The 3.0-liter FFV* B3000 can burn both regular unleaded gasoline and E85 (85% ethanol, 15% gasoline); for comparison purposes, we show the gasoline hp and torque figures. The 4.0-liter engine is the largest in any import-brand compact pickup.





SAFETY FEATURES:

- Dual air bag Supplemental Restraint System (SRS) with passenger-side deactivation switch*
- Head restraints for front outboard occupants
- Three-point safety belts for front outboard occupants
- Height-adjustable front shoulder-belt anchors
- Adjustable lap belt for center front passenger
- Center high-mount stop light
- Energy-absorbing crumple zones
- Breakaway inside rearview mirror
- Side-impact door beams
- Energy-absorbing steering column and instrument panel
- Shift interlock (automatic transmission)
- Clutch interlock (manual transmission)

*Special precautions must be taken when using a rear-facing child restraint in this vehicle. Please review the owner's manual for specific instructions.

Mazda is proud to be a founding sponsor of the "Tread Lightly!"[®] program, promoting environmental awareness when driving off-road.

COLOR COMBINATIONS
(INTERIOR; EXTERIOR)

Gray: Black, Tread Red Metallic, Medium Platinum Metallic, Medium Willow Green Metallic

Tan: Oxford White, Amazon Green Metallic, Harvest Gold Metallic, Aztec Gold Metallic

SX trim level is only available in Oxford White and Black exterior colors.

Specific combinations of colors and interiors may vary by season and geographical area.

Bedliner



Side steps



Cargo organizer

ACCESSORIES

Personalize, protect and enhance your new 8-Series Truck with Genuine Mazda Accessories. They're designed specifically for your Mazda and are covered by the new-vehicle warranty when installed by a Mazda Dealer prior to or at the time of initial vehicle retail delivery. Other Genuine Mazda Accessories available include: trailer hitch, remote keyless entry/wantitheft alarm, 14" alloy wheels, tie-down hooks, carpeted floor mats and cruise control.

MODEL AVAILABILITY	B2500 SX	B2500 SE	B3000 SE	B4000 SE
4x2 Regular Cab	M5 or R4	M5* or R4*	-	M5 or R5
4x2 Cab Plus/Cab Plus 4	-	M5/M5	M5* or R4*/M5 or R4	R5/R5
4x4 Regular Cab	-	-	M5 or R4	-
4x4 Cab Plus/Cab Plus 4	-	-	M5 or R4/M5 or R4	M5 or R5/M5* or R5*

M5 = 5-speed manual; R4 = 4-speed automatic; M5* = 5-speed automatic. *Troy Lee Appearance Package available on these models.

STANDARD FEATURES, ALL MODELS

Power-assisted rack-and-pinion steering	Dual outside rearview mirrors	Day/night inside rearview mirror
Rear-wheel Anti-lock Brake System (rear-wheel ABS)	2-speed variable-intermittent windshield wipers	Voltmeter, oil-pressure and temperature gauges
Front bumper and rear step bumper	Tinted glass	Resettable trip odometer
Front and rear mud guards	Double-wall cargo bed with tie-down loops	Heater/defroster with 4-speed blower
Black fender flares (4x4)	Fold-down jump seats (Cab Plus and Cab Plus 4)	Front side-window demisters

EXTERIOR FEATURES	B2500 SX	B2500 SE	B3000 SE	B4000 SE
Wheels	14-inch styled steel	15-inch alloy	15-inch alloy	15-inch alloy
Tires	P205/75R16 BW	15-inch alloy 15-inch Troy Lee alloy*	16-inch Troy Lee alloy*	16-inch Troy Lee alloy*
Grille, bumpers, tailgate handle	black	bright	bright	bright
Fog lights	R	R	R/P	S
Cargo-bed light	n/a	S	S	S

*with Troy Lee Appearance Package

INTERIOR FEATURES	B2500 SX	B2500 SE	B3000 SE	B4000 SE
Front seat	vinyl bench	60/40 cloth bench	60/40 cloth bench	60/40 cloth bench
Fold-down center armrest	n/a	with storage	with storage	with storage
Floor covering	vinyl	cut-pile carpeting	cut-pile carpeting	cut-pile carpeting
Dual cup holders, door map pockets, cloth headliner	cup holders only	S	S	S
Tachometer	n/a	S	S	S
Leather-wrapped steering wheel rim	n/a	n/a	n/a	S
Standard audio system	AM/FM stereo	AM/FM/CD stereo	AM/FM/CD stereo	AM/FM/cassette/CD stereo
CFC-free air conditioning	0	0	0	0

OPTION PACKAGES	B2500 SX	B2500 SE	B3000 SE	B4000 SE
Convenience Package: Tilt steering wheel, cruise control, bedliner, sliding rear window, carpeted floor mats, flip-out rear quarter windows (Cab Plus 2-door only)	n/a	0	0	S
Power Package: Power windows, power door locks, power mirrors, remote keyless entry with two transmitters	n/a	0	0	S (4x4) 0 (4x2)
Troy Lee Appearance Package: Special Troy Lee-designed reflective body-side graphics, unique interior trim with carbon-fiber-look accents, floor mats. Available only with gray interior and Speeder Red Metallic, Amazon Green Metallic or Black exterior	n/a	0 (Regular Cab) includes 15-inch Troy Lee alloys; P225/70R15 RWL tires	0 (4x2 Cab Plus) includes 16-inch Troy Lee alloys; P245/75R16 RWL tires; 4x4 ride height, fog lights	0 (4x4 Cab Plus 4) includes 16-inch Troy Lee alloys; P245/75R16 RWL tires; leather-trimmed upholstery*
Traction Package: Limited-slip rear differential, 8-wheel Anti-lock Brake System (ABS)	n/a	n/a	n/a	0 (4x4 Cab Plus/Cab Plus 4)

CHASSIS	B2500 SX	B2500 SE	B3000 SE	B4000 SE
Power-assisted rack-and-pinion steering	Engine-speed-sensing variable power assist; different ratios for Regular Cab and Cab Plus models			
Power-assisted front disc/rear drum brakes	10.3-inch ventilated discs/9.0-inch drums			
front suspension	Independent double-wishbone, with gas-charged shock absorbers and stabilizer bar			
Rear suspension	Semi-floating live axle, gas-charged shock absorbers and rear stabilizer bar (4x4 only)			
front/rear springs	4x2: coil springs/leaf springs — 4x4: torsion bars/2-stage leaf springs			

DIMENSIONS/CAPACITIES (approx)	4x2 REGULAR CAB	4x2 CAB PLUS/CAB PLUS 4	4x4 REGULAR CAB	4x4 CAB PLUS/CAB PLUS 4
Wheelbase/overall length/overall width/overall height	111.6/187.5/69.4/64.9	125.7/202.9/69.4/64.7 ¹	111.6/187.7/70.3/67.6	125.9/201.7/79.3/67.5 ¹
Track: front/rear	58.6/57.3	58.6/57.3	58.6/57.3	58.6/57.3
Cargo bed: length/depth/width/between wheel wells	71.8/16.5/52.0/40.4	71.8/16.5/52.0/40.4	71.8/16.5/52.0/40.4	71.8/16.5/52.0/40.4
Headroom/legroom/shoulder room: front	39.2/42.4/54.5	39.2/42.2/53.8	39.2/42.4/54.5	39.2/42.3/53.8
rear	n/a	35.6/40.3/15.3	n/a	35.6/40.3/15.3
Ground clearance at rear axle housing	4.7	7.3 ¹	7.8	8.5 ¹
Base curb weight (lb), manual transmission	2998	3210	3425	3658
Fuel capacity/turning circle, curb-to-curb	18.5 gal/37.7 ft	18.5 gal/42.7 ft	18.5 gal/39.1 ft	18.5 gal/43.0 ft

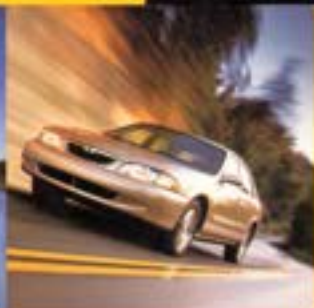
S: Standard; 0: Optional; n/a: Not available; R: Dealer-installed accessory

¹Front seating surfaces upholstered in leather except for vinyl or seat side panels, rear sides of seatbacks and other minor areas. ²Troy Lee Appearance Pkg. height, 67.6" (67.6" on 4x4 Cab Plus 4); ground clearance, 8.4"

Information and illustrations in this brochure are based on the latest competitive and Mazda product information available at the time of publication. Some equipment shown is optional at extra cost; specific options may be available only in combination with other options. Specific combinations of equipment or features may vary from time to time and by geographic area; colors in illustrations may vary from actual upholstery or paint colors due to reproduction and printing processes. Mazda reserves the right to make changes without notice in product content and price at any time.


mazda

Get in. Be moved.

MILLENIA


626


PROTEGÉ
MIATA
B-SERIES TRUCKS

WARRANTY: Mazda warrants that the Mazda vehicle will be free of defects with normal use and prescribed maintenance for 36 months or 50,000 miles, whichever comes first, or Mazda will repair any problem without charge. Ordinary maintenance items or adjustments, parts subject to normal wear and replacement and certain other items are excluded. This transferable "limited warranty" is free on all new 1999 Mazda vehicles sold and serviced in the United States. See your Mazda Dealer for details.

Complement the limited warranty on your new vehicle with the Mazda Extended Protection Plan, the only service agreement backed by Mazda. Ask your dealer for details.

SEE US ON THE WEB: Just point your browser to www.mazdausa.com and get interactive with the B-Series Truck. Build your own B-Series Truck, choose your options, get pricing, finance information and even a map to your nearest Mazda Dealer.

